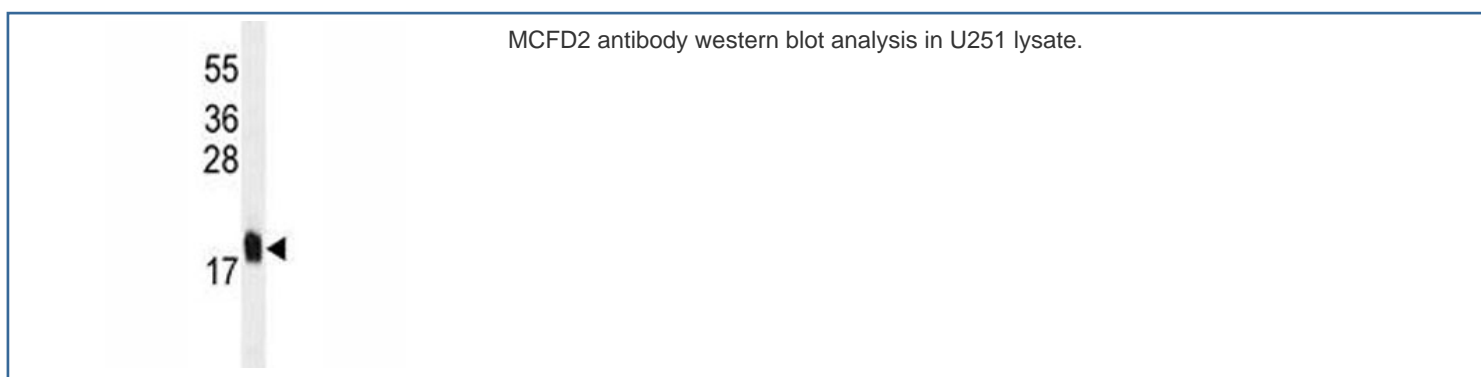


MCFD2 Antibody [clone 165CT13.1.6] (F40232)

Catalog No.	Formulation	Size
F40232-0.4ML	In 1X PBS, pH 7.4, with 0.09% sodium azide	0.4 ml
F40232-0.08ML	In 1X PBS, pH 7.4, with 0.09% sodium azide	0.08 ml

[Bulk quote request](#)

Availability	1-3 business days
Species Reactivity	Human
Format	Purified
Clonality	Monoclonal (mouse origin)
Isotype	Mouse IgG1, k
Clone Name	165CT13.1.6
Purity	Purified
UniProt	Q8NI22
Applications	Western blot : 1:100-1:500
Limitations	This MCFD2 antibody is available for research use only.



Description

The MCFD2-LMAN1 complex forms a specific cargo receptor for the ER-to-Golgi transport of selected proteins. Plays a role in the secretion of coagulation factors.

Application Notes

Titration of the MCFD2 antibody may be required due to differences in protocols and secondary/substrate sensitivity.

Immunogen

This MCFD2 antibody was produced from a mouse immunized with MCFD2 recombinant protein.

Storage

Aliquot the MCFD2 antibody and store frozen at -20oC or colder. Avoid repeated freeze-thaw cycles.