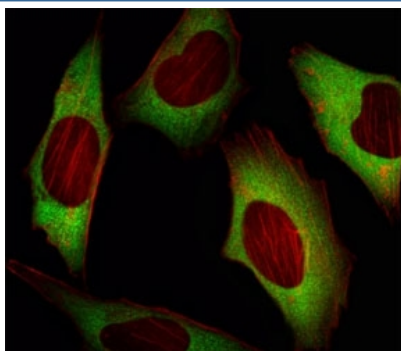


## EIF4E Antibody [clone 163CT48.1.9] (F40229)

Catalog No.	Formulation	Size
F40229-0.4ML	In 1X PBS, pH 7.4, with 0.09% sodium azide	0.4 ml
F40229-0.08ML	In 1X PBS, pH 7.4, with 0.09% sodium azide	0.08 ml

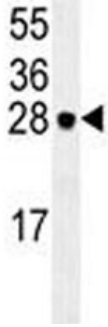
[Bulk quote request](#)

<b>Availability</b>	1-3 business days
<b>Species Reactivity</b>	Human
<b>Format</b>	Purified
<b>Clonality</b>	Monoclonal (mouse origin)
<b>Isotype</b>	Mouse IgG1, k
<b>Clone Name</b>	163CT48.1.9
<b>Purity</b>	Purified
<b>UniProt</b>	P06730
<b>Applications</b>	Immunofluorescence : 1:10-1:50 Western blot : 1:100-1:500
<b>Limitations</b>	This EIF4E antibody is available for research use only.



Fluorescent image of HeLa cell stained with EIF4E antibody. EIF4E immunoreactivity is localized to the cytoplasm.

EIF4E antibody western blot analysis in HeLa lysate. Predicted molecular weight ~27 kDa.



## Description

EIF4E recognizes and binds the 7-methylguanosine-containing mRNA cap during an early step in the initiation of protein synthesis and facilitates ribosome binding by inducing the unwinding of the mRNAs secondary structures.

## Application Notes

Titration of the EIF4E antibody may be required due to differences in protocols and secondary/substrate sensitivity.

## Immunogen

This EIF4E antibody was produced from a mouse immunized with EIF4E recombinant protein.

## Storage

Aliquot the EIF4E antibody and store frozen at -20oC or colder. Avoid repeated freeze-thaw cycles.