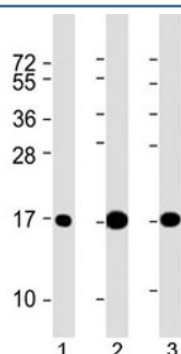


## LC3A Antibody (MAP1LC3A) [clone 166AT1234] (F40209)

Catalog No.	Formulation	Size
F40209-0.2ML	In 1X PBS, pH 7.4, with 0.09% sodium azide	0.2 ml
F40209-0.05ML	In 1X PBS, pH 7.4, with 0.09% sodium azide	0.05 ml

[Bulk quote request](#)

<b>Availability</b>	1-3 business days
<b>Species Reactivity</b>	Human, Mouse, Rat
<b>Format</b>	Purified
<b>Clonality</b>	Monoclonal (mouse origin)
<b>Isotype</b>	Mouse IgG1, k
<b>Clone Name</b>	166AT1234
<b>Purity</b>	Purified
<b>UniProt</b>	Q9H492
<b>Applications</b>	Western blot : 1:1000-1:2000
<b>Limitations</b>	This LC3 antibody is available for research use only.



Western blot testing of 1) human brain, 2) mouse brain and 3) rat brain lysate with LC3 antibody at 1:2000. Predicted molecular weight ~14 kDa.

## Description

MAP1A and MAP1B are microtubule-associated proteins which mediate the physical interactions between microtubules and components of the cytoskeleton. MAP1A and MAP1B each consist of a heavy chain subunit and multiple light chain subunits. The protein encoded by this gene is one of the light chain subunits and can associate with either MAP1A or MAP1B. Two

transcript variants encoding different isoforms have been found for this gene.

## Application Notes

Titration of the LC3 antibody may be required due to differences in protocols and secondary/substrate sensitivity.

## Immunogen

This LC3 antibody was produced from a mouse immunized with a full length recombinant protein of human LC3A/MAP1LC3A.

## Storage

Aliquot the LC3 antibody and store frozen at -20oC or colder. Avoid repeated freeze-thaw cycles.