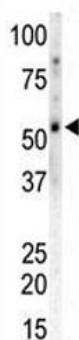


## CAMK2G Antibody (F40148)

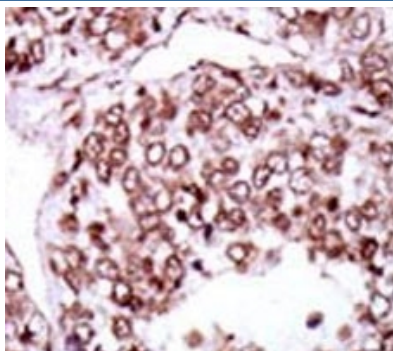
Catalog No.	Formulation	Size
F40148-0.4ML	In 1X PBS, pH 7.4, with 0.09% sodium azide	0.4 ml
F40148-0.08ML	In 1X PBS, pH 7.4, with 0.09% sodium azide	0.08 ml

[Bulk quote request](#)

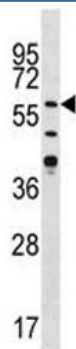
<b>Availability</b>	1-3 business days
<b>Species Reactivity</b>	Human, Mouse, Primate, Rat
<b>Format</b>	Purified
<b>Clonality</b>	Polyclonal (rabbit origin)
<b>Isotype</b>	Rabbit Ig
<b>Purity</b>	Purified
<b>UniProt</b>	Q13555
<b>Applications</b>	Western blot : 1:1000 IHC (Paraffin) : 1:50-1:100
<b>Limitations</b>	This CAMK2G antibody is available for research use only.



Western blot of CAMK2G and mouse heart tissue lysate



IHC analysis of FFPE human hepatocarcinoma stained with the CAMK2G antibody



Western blot analysis of CAMK2G antibody in Jurkat lysate

## Description

CaM-kinase II (CAMK2) is a prominent Ser/Thr protein kinase in the central nervous system that may function in long-term potentiation and neurotransmitter release. Likely autophosphorylation of Thr-286 allows the kinase to switch from a calmodulin-dependent to a calmodulin-independent state. CAMK2 is composed of four different chains: alpha, beta, gamma, and delta. The different isoforms assemble into homo- or heteromultimeric holoenzymes composed of 8 to 12 subunits.

## Application Notes

Titration of the CAMK2G antibody may be required due to differences in protocols and secondary/substrate sensitivity.

## Immunogen

A portion of amino acids 309-338 from the human protein was used as the immunogen for this CAMK2G antibody.

## Storage

Aliquot the CAMK2G antibody and store frozen at -20°C or colder. Avoid repeated freeze-thaw cycles.