

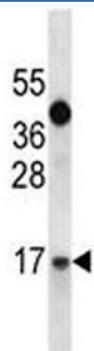
## IGF1 Antibody (F40099)

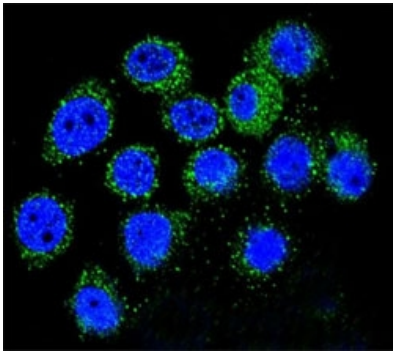
Catalog No.	Formulation	Size
F40099-0.4ML	In 1X PBS, pH 7.4, with 0.09% sodium azide	0.4 ml
F40099-0.08ML	In 1X PBS, pH 7.4, with 0.09% sodium azide	0.08 ml

[Bulk quote request](#)

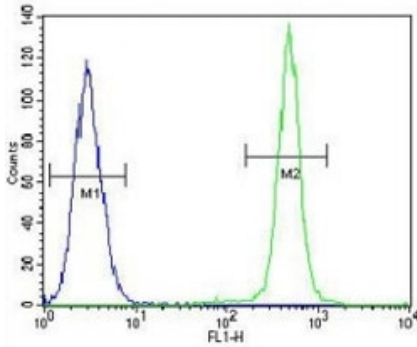
<b>Availability</b>	1-3 business days
<b>Species Reactivity</b>	Human
<b>Format</b>	Antigen affinity purified
<b>Clonality</b>	Polyclonal (rabbit origin)
<b>Isotype</b>	Rabbit Ig
<b>Purity</b>	Antigen affinity
<b>UniProt</b>	P05019-2
<b>Applications</b>	Western blot : 1:1000 Immunofluorescence : 1:10-1:50 Flow Cytometry : 1:10-1:50 IHC (Paraffin) : 1:10-1:50
<b>Limitations</b>	This IGF1 antibody is available for research use only.

IGF1 antibody western blot analysis in A549 lysate. Predicted molecular weight ~15 kDa.

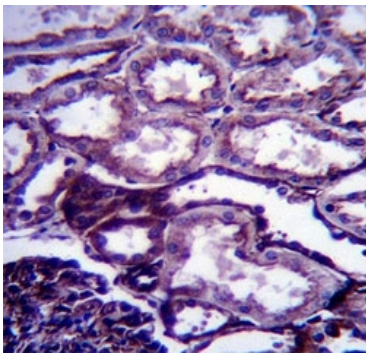




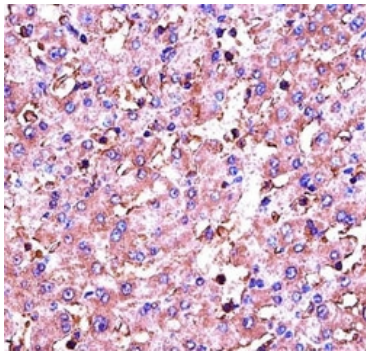
Confocal immunofluorescent analysis of IGF1 antibody with A549 cells followed by Alexa Fluor 488-conjugated goat anti-rabbit IgG (green). DAPI was used as a nuclear counterstain (blue).



IGF1 antibody flow cytometric analysis of A549 cells (green) compared to a negative control cell (blue). FITC-conjugated goat-anti-rabbit secondary Ab was used for the analysis.



IGF1 antibody immunohistochemistry analysis in formalin fixed and paraffin embedded human kidney tissue.



IGF1 antibody immunohistochemistry analysis in formalin fixed and paraffin embedded human liver tissue.

## Description

The protein encoded by this gene is similar to insulin in function and structure and is a member of a family of proteins involved in mediating growth and development. The encoded protein is processed from a precursor, bound by a specific receptor, and secreted. Defects in this gene are a cause of insulin-like growth factor I deficiency. Several transcript variants encoding different isoforms have been found for this gene.

## Application Notes

Titration of the IGF1 antibody may be required due to differences in protocols and secondary/substrate sensitivity.

## **Immunogen**

A portion of amino acids 115-144 from the human protein was used as the immunogen for this IGF1 antibody.

## **Storage**

Aliquot the IGF1 antibody and store frozen at -20oC or colder. Avoid repeated freeze-thaw cycles.