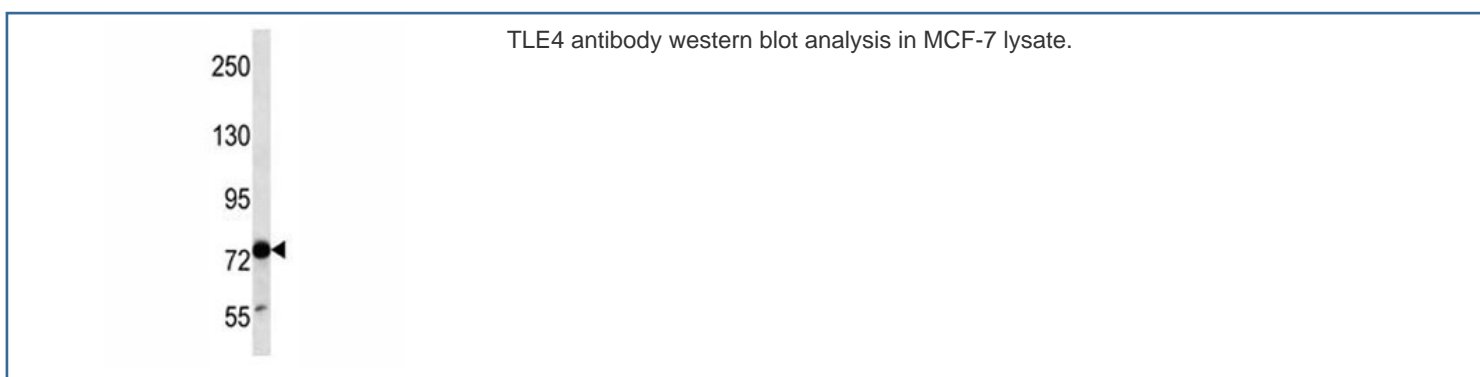


## TLE4 Antibody (F40024)

Catalog No.	Formulation	Size
F40024-0.4ML	In 1X PBS, pH 7.4, with 0.09% sodium azide	0.4 ml
F40024-0.08ML	In 1X PBS, pH 7.4, with 0.09% sodium azide	0.08 ml

[Bulk quote request](#)

<b>Availability</b>	1-3 business days
<b>Species Reactivity</b>	Human
<b>Predicted Reactivity</b>	Mouse, Rat
<b>Format</b>	Antigen affinity purified
<b>Clonality</b>	Polyclonal (rabbit origin)
<b>Isotype</b>	Rabbit Ig
<b>Purity</b>	Antigen affinity
<b>UniProt</b>	Q04727
<b>Applications</b>	Western blot : 1:1000
<b>Limitations</b>	This TLE4 antibody is available for research use only.



## Description

TLE4 is a transcriptional corepressor that binds to a number of transcription factors. Inhibits the transcriptional activation mediated by PAX5, and by CTNNB1 and TCF family members in Wnt signaling. The effects of full-length TLE family members may be modulated by association with dominant-negative AES (By similarity).

## Application Notes

Titration of the TLE4 antibody may be required due to differences in protocols and secondary/substrate sensitivity.

## Immunogen

A portion of amino acids 167-196 from the human protein was used as the immunogen for this TLE4 antibody.

## Storage

Aliquot the TLE4 antibody and store frozen at -20oC or colder. Avoid repeated freeze-thaw cycles.