

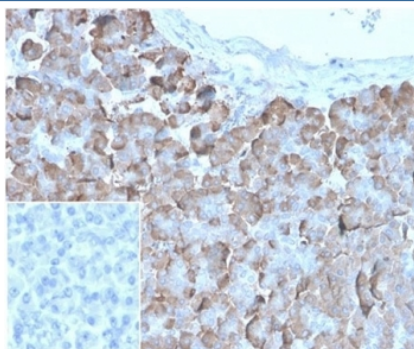
VLDLR Antibody / VLDL Receptor [clone rVLDLR/1337] (V9635)

Catalog No.	Formulation	Size
V9635-100UG	0.2 mg/ml in 1X PBS with 0.1 mg/ml BSA (US sourced), 0.05% sodium azide	100 ug
V9635-20UG	0.2 mg/ml in 1X PBS with 0.1 mg/ml BSA (US sourced), 0.05% sodium azide	20 ug
V9635SAF-100UG	1 mg/ml in 1X PBS; BSA free, sodium azide free	100 ug

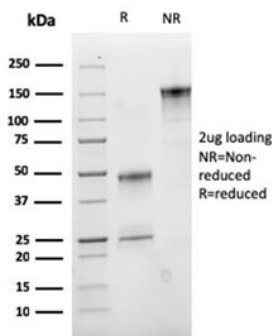
Recombinant **MOUSE MONOCLONAL**

[Bulk quote request](#)

Availability	1-3 business days
Species Reactivity	Human
Format	Purified
Clonality	Recombinant Mouse Monoclonal
Isotype	Mouse IgG1, kappa
Clone Name	rVLDLR/1337
Purity	Protein A/G affinity
UniProt	P98155
Localization	Cytoplasmic
Applications	Immunohistochemistry (FFPE) : 1-2ug/ml
Limitations	This VLDLR antibody is available for research use only.



IHC staining of FFPE human pancreatic tissue with VLDLR antibody (clone rVLDLR/1337). Negative control inset: PBS instead of primary antibody to control for secondary binding. HIER: boil tissue sections in pH 9 10mM Tris with 1mM EDTA for 20 min and allow to cool before testing.



SDS-PAGE analysis of purified, BSA-free VLDLR antibody (clone rVLDLR/1337) as confirmation of integrity and purity.

Description

VLDLR (very low density lipoprotein receptor) is a member of the LDL receptor gene family, which includes LDL receptor, LRP, megalin, VLDLR and ApoER2. The LDL receptor family is characterized by a cluster of cysteine-rich class A repeats, epidermal growth factor (EGF)-like repeats, YWTD repeats and an O-linked sugar domain. VLDLR associates with RAP (receptor associated protein) during receptor folding, and RAP facilitates the secretion of the extracellular region of VLDLR. VLDLR is thought to mediate the interaction of extracellular Reelin and cytosolic mDab1 (mammalian disabled protein), which activates a tyrosine kinase. This pathway regulates the migration of neurons along the radial glial fiber network during brain development.

Application Notes

Optimal dilution of the VLDLR antibody should be determined by the researcher.

Immunogen

A recombinant human protein fragment from the C-terminal region was used as the immunogen for the VLDLR antibody.

Storage

Aliquot the VLDLR antibody and store frozen at -20°C or colder. Avoid repeated freeze-thaw cycles.