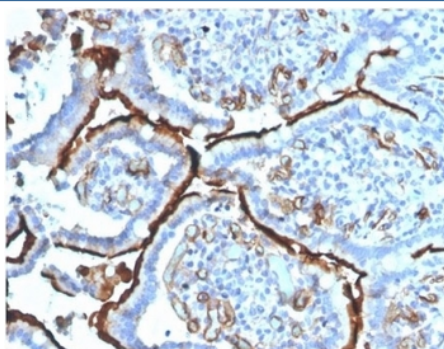


Angiotensin Converting Enzyme Antibody / ACE [clone ACE/3764] (V9620)

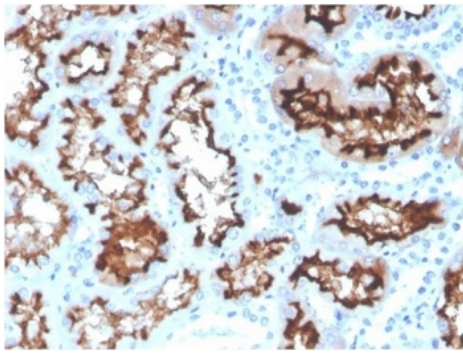
Catalog No.	Formulation	Size
V9620-100UG	0.2 mg/ml in 1X PBS with 0.1 mg/ml BSA (US sourced), 0.05% sodium azide	100 ug
V9620-20UG	0.2 mg/ml in 1X PBS with 0.1 mg/ml BSA (US sourced), 0.05% sodium azide	20 ug
V9620SAF-100UG	1 mg/ml in 1X PBS; BSA free, sodium azide free	100 ug

[Bulk quote request](#)

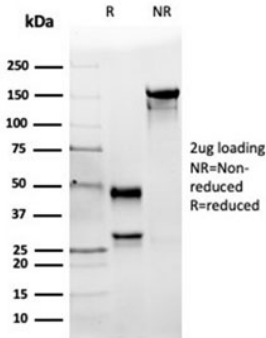
Availability	1-3 business days
Species Reactivity	Human
Format	Purified
Clonality	Monoclonal (mouse origin)
Isotype	Mouse IgG1, kappa
Clone Name	ACE/3764
Purity	Protein A/G affinity
UniProt	P12821
Localization	Cell Surface
Applications	ELISA (order BSA-free format for coating) : Immunohistochemistry (FFPE) : 1-2ug/ml
Limitations	This Angiotensin Converting Enzyme antibody is available for research use only.



IHC staining of FFPE human colon carcinoma tissue with Angiotensin Converting Enzyme antibody (clone ACE/3764) at 2ug/ml in PBS for 30min RT. HIER: boil tissue sections in pH 9 10mM Tris with 1mM EDTA for 20 min and allow to cool before testing.

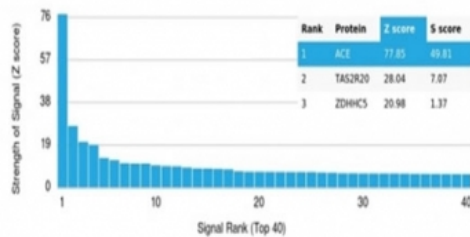


IHC staining of FFPE human kidney tissue with Angiotensin Converting Enzyme antibody (clone ACE/3764) at 2ug/ml in PBS for 30min RT. HIER: boil tissue sections in pH 9 10mM Tris with 1mM EDTA for 20 min and allow to cool before testing.



SDS-PAGE analysis of purified, BSA-free Angiotensin Converting Enzyme antibody (clone ACE/3764) as confirmation of integrity and purity.

Human Protein Microarray Specificity Validation



Analysis of HuProt(TM) microarray containing more than 19,000 full-length human proteins using Angiotensin Converting Enzyme antibody (clone ACE/3764). These results demonstrate the foremost specificity of the ACE/3764 mAb. Z- and S- score: The Z-score represents the strength of a signal that an antibody (in combination with a fluorescently-tagged anti-IgG secondary Ab) produces when binding to a particular protein on the HuProt(TM) array. Z-scores are described in units of standard deviations (SD's) above the mean value of all signals generated on that array. If the targets on the HuProt(TM) are arranged in descending order of the Z-score, the S-score is the difference (also in units of SD's) between the Z-scores. The S-score therefore represents the relative target specificity of an Ab to its intended target.

Description

This gene encodes an enzyme involved in catalyzing the conversion of angiotensin I into a physiologically active peptide angiotensin II. Angiotensin II is a potent vasopressor and aldosterone-stimulating peptide that controls blood pressure and fluid-electrolyte balance. This enzyme plays a key role in the renin-angiotensin system. Many studies have associated the presence or absence of a 287 bp Alu repeat element in this gene with the levels of circulating enzyme or cardiovascular pathophysiologies. Two most abundant alternatively spliced variants of this gene encode two isozymes - the somatic form and the testicular form that are equally active. Multiple additional alternatively spliced variants have been identified but their full length nature has not been determined.

Application Notes

Optimal dilution of the Angiotensin Converting Enzyme antibody should be determined by the researcher.

Immunogen

Full-length recombinant human protein was used as the immunogen for the Angiotensin Converting Enzyme antibody.

Storage

Aliquot the Angiotensin Converting Enzyme antibody and store frozen at -20oC or colder. Avoid repeated freeze-thaw cycles.

Ordering:Phone:858.663.9055 | Fax:1.267.821.0800 | Email:info@nsjbio.com

Copyright © NSJ Bioreagents. All rights reserved