

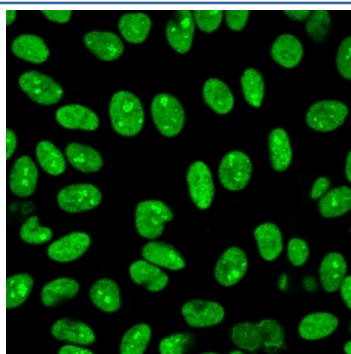
Recombinant Human Nuclear Antigen Antibody [clone 235-1R] (V9618)

Catalog No.	Formulation	Size
V9618-100UG	0.2 mg/ml in 1X PBS with 0.1 mg/ml BSA (US sourced), 0.05% sodium azide	100 ug
V9618-20UG	0.2 mg/ml in 1X PBS with 0.1 mg/ml BSA (US sourced), 0.05% sodium azide	20 ug
V9618SAF-100UG	1 mg/ml in 1X PBS; BSA free, sodium azide free	100 ug

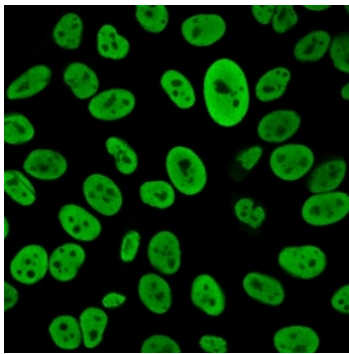
Recombinant **RABBIT MONOCLONAL**

[Bulk quote request](#)

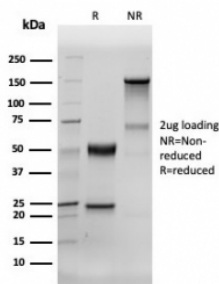
Availability	1-3 business days
Species Reactivity	Human
Format	Purified
Clonality	Recombinant Rabbit Monoclonal
Isotype	Rabbit IgG, kappa
Clone Name	235-1R
Purity	Protein A/G affinity
UniProt	Not Known
Localization	Nucleus
Applications	Flow cytometry : 1-2ug/million cells Immunofluorescence : 1-3ug/ml
Limitations	This recombinant Human Nuclear Antigen antibody is available for research use only.



Immunofluorescent staining of MeOH-fixed human HeLa cells with recombinant Human Nuclear Antigen antibody (green, clone 235-1R).



Immunofluorescent staining of PFA-fixed human HeLa cells recombinant Human Nuclear Antigen antibody (green, clone 235-1R).



SDS-PAGE analysis of purified, BSA-free recombinant Human Nuclear Antigen antibody (clone 235-1R) as confirmation of integrity and purity.

Description

This monoclonal antibody is an excellent marker for human cells in xenographic model research. It reacts specifically with human cells. It is a part of a new panel of reagents, which recognizes subcellular organelles or compartments of human cells. These markers may be useful in identification of these organelles in cells, tissues, and biochemical preparations. MAb 235-1R recognizes an antigen associated with the nuclei in human cells. It can be used to stain the nuclei in cell or tissue preparations and can be used as a nuclear marker in subcellular fractions. It produces a speckled pattern in normal and malignant cells and may be used to stain the nuclei of cells in fixed or frozen tissue sections. It can also be used with paraformaldehyde fixed frozen tissue or cell preparations.

Application Notes

Optimal dilution of the recombinant Human Nuclear Antigen antibody should be determined by the researcher.

Immunogen

Nuclei of human myeloid leukemia biopsy cells were used as the immunogen for the recombinant Human Nuclear Antigen antibody.

Storage

Aliquot the recombinant Human Nuclear Antigen antibody and store frozen at -20°C or colder. Avoid repeated freeze-thaw cycles.