

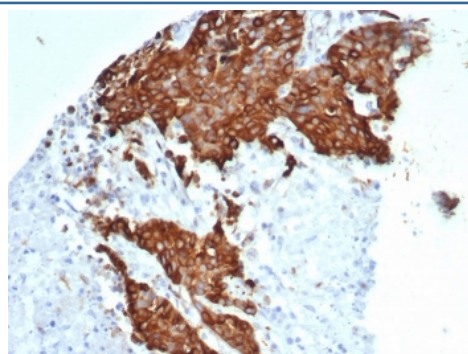
Recombinant Beta Tubulin Antibody / TUBB3 [clone TUBB3/7089R] (V9457)

| Catalog No. | Formulation | Size |
|----------------|---|--------|
| V9457-100UG | 0.2 mg/ml in 1X PBS with 0.1 mg/ml BSA (US sourced), 0.05% sodium azide | 100 ug |
| V9457-20UG | 0.2 mg/ml in 1X PBS with 0.1 mg/ml BSA (US sourced), 0.05% sodium azide | 20 ug |
| V9457SAF-100UG | 1 mg/ml in 1X PBS; BSA free, sodium azide free | 100 ug |

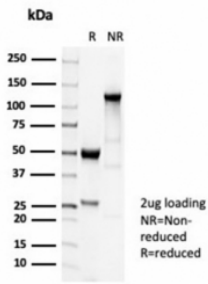
Recombinant **RABBIT MONOCLONAL**

[Bulk quote request](#)

| | |
|---------------------------|--|
| Availability | 1-3 business days |
| Species Reactivity | Human |
| Format | Purified |
| Clonality | Recombinant Rabbit Monoclonal |
| Isotype | Rabbit IgG |
| Clone Name | TUBB3/7089R |
| Purity | Protein A/G affinity |
| UniProt | Q13509 |
| Localization | Cytoplasm |
| Applications | Immunohistochemistry (FFPE) : 1-2ug/ml |
| Limitations | This recombinant Beta Tubulin antibody is available for research use only. |



IHC staining of FFPE human ovarian carcinoma tissue with recombinant Beta Tubulin antibody (clone TUBB3/7089R). HIER: boil tissue sections in pH 9 10mM Tris with 1mM EDTA for 20 min and allow to cool before testing.



SDS-PAGE analysis of purified, BSA-free recombinant Beta Tubulin antibody (clone TUBB3/7089R) as confirmation of integrity and purity.

Description

This gene encodes a class III member of the beta tubulin protein family. Beta tubulins are one of two core protein families (alpha and beta tubulins) that heterodimerize and assemble to form microtubules. This protein is primarily expressed in neurons and may be involved in neurogenesis and axon guidance and maintenance. Mutations in this gene are the cause of congenital fibrosis of the extraocular muscles type 3. In adults, tubulin beta 3 (TUBB3) is primarily expressed in neurons and is commonly used as a neuronal marker. It plays an important role in neuronal cell proliferation and differentiation.

Application Notes

Optimal dilution of the recombinant Beta Tubulin antibody should be determined by the researcher.

Immunogen

A portion of amino acids 437-450 from the human protein was used as the immunogen for the recombinant Beta Tubulin antibody.

Storage

Aliquot the recombinant Beta Tubulin antibody and store frozen at -20oC or colder. Avoid repeated freeze-thaw cycles.