

Recombinant CD3 epsilon Antibody [clone C3e/4653R] (V9434)

| Catalog No. | Formulation | Size |
|----------------|---|--------|
| V9434-100UG | 0.2 mg/ml in 1X PBS with 0.1 mg/ml BSA (US sourced), 0.05% sodium azide | 100 ug |
| V9434-20UG | 0.2 mg/ml in 1X PBS with 0.1 mg/ml BSA (US sourced), 0.05% sodium azide | 20 ug |
| V9434SAF-100UG | 1 mg/ml in 1X PBS; BSA free, sodium azide free | 100 ug |

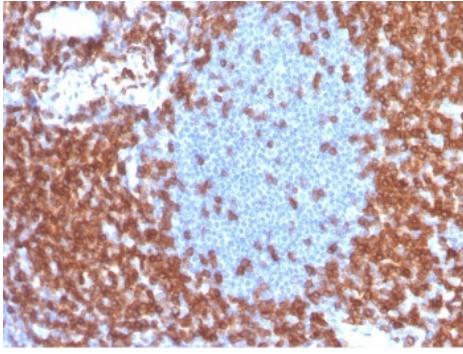
Recombinant **RABBIT MONOCLONAL**

[Bulk quote request](#)

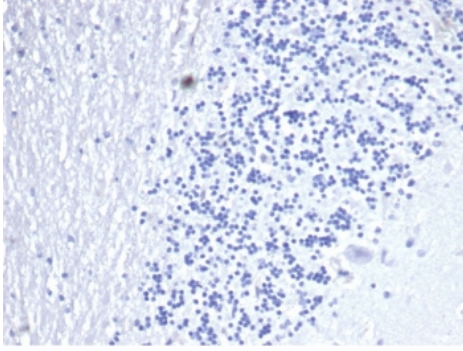
| | |
|--------------------|---|
| Availability | 1-3 business days |
| Species Reactivity | Human |
| Format | Purified |
| Clonality | Recombinant Rabbit Monoclonal |
| Isotype | Rabbit IgG, kappa |
| Clone Name | C3e/4653R |
| Purity | Protein A/G affinity |
| UniProt | P07766 |
| Localization | Cell Surface, Cytoplasm |
| Applications | Immunohistochemistry (FFPE) : 1-2ug/ml Western blot : 1-2ug/ml |
| Limitations | This recombinant CD3 epsilon antibody is available for research use only. |



Western blot testing of human Jurkat cell lysate using recombinant CD3 epsilon antibody (clone C3e/4653R). Predicted molecular weight ~23 kDa.



IHC staining of FFPE human tonsil tissue with recombinant CD3e antibody (clone CD3e/4653R) at 2ug/ml. HIER: boil tissue sections in pH 9 10mM Tris with 1mM EDTA for 20 min and allow to cool before testing.



Negative control: IHC staining of FFPE human brain tissue using recombinant CD3 epsilon antibody (clone C3e/4653R) at 2ug/ml in PBS for 30min RT. HIER: boil tissue sections in pH 9 10mM Tris with 1mM EDTA for 20 min and allow to cool before testing.

Description

Cluster of differentiation 3 (CD3) is a multimeric protein complex, known historically as the T3 complex, and is composed of four distinct polypeptide chains: epsilon, gamma, delta and zeta. The CD3 complex serves as a T cell co-receptor that associates noncovalently with the T cell receptor (TCR). CD3 antigen appears at all stages of T cell development which makes it an ideal T cell marker for both the detection of normal T cells and T cell neoplasms (lymphomas and leukemias).

Application Notes

Optimal dilution of the recombinant CD3 epsilon antibody should be determined by the researcher.

Immunogen

A portion of amino acids 100-200 was used as the immunogen for the recombinant CD3 epsilon antibody.

Storage

Aliquot the recombinant CD3 epsilon antibody and store frozen at -20oC or colder. Avoid repeated freeze-thaw cycles.