

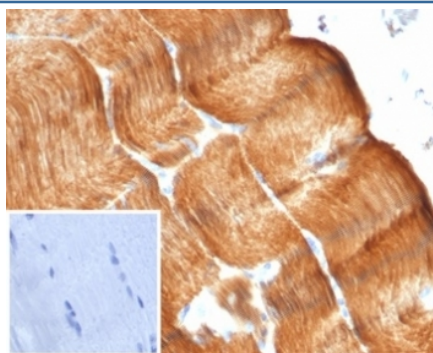
## Recombinant Sarcomeric Alpha Actinin Antibody / Alpha Actinin 2 / ACTN2 [clone ACTN2/7041R] (V9433)

Catalog No.	Formulation	Size
V9433-100UG	0.2 mg/ml in 1X PBS with 0.1 mg/ml BSA (US sourced), 0.05% sodium azide	100 ug
V9433-20UG	0.2 mg/ml in 1X PBS with 0.1 mg/ml BSA (US sourced), 0.05% sodium azide	20 ug
V9433SAF-100UG	1 mg/ml in 1X PBS; BSA free, sodium azide free	100 ug

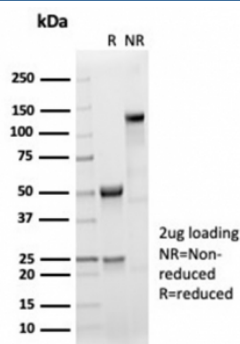
Recombinant **RABBIT MONOCLONAL**

[Bulk quote request](#)

Availability	1-3 business days
Species Reactivity	Human
Format	Purified
Clonality	Recombinant Rabbit Monoclonal
Isotype	Rabbit IgG, kappa
Clone Name	ACTN2/7041R
Purity	Protein A/G affinity
UniProt	P35609
Localization	Cytoplasm
Applications	Immunohistochemistry (FFPE) : 1-2ug/ml
Limitations	This recombinant Sarcomeric Alpha Actinin antibody is available for research use only.



IHC staining of FFPE human skeletal muscle with recombinant Sarcomeric Alpha Actinin antibody (clone ACTN2/7041R). Negative control inset: PBS used instead of primary antibody to control for secondary Ab binding. HIER: boil tissue sections in pH 9 10mM Tris with 1mM EDTA for 20 min and allow to cool before testing.



SDS-PAGE analysis of purified, BSA-free recombinant Sarcomeric Alpha Actinin antibody (clone ACTN2/7041R) as confirmation of integrity and purity.

## Description

Alpha actinins belong to the spectrin gene superfamily which represents a diverse group of cytoskeletal proteins, including the alpha and beta spectrins and dystrophins. Alpha actinin is an actin-binding protein with multiple roles in different cell types. In non-muscle cells, the cytoskeletal isoform is found along microfilament bundles and adherens-type junctions, where it is involved in binding actin to the membrane. In contrast, skeletal, cardiac, and smooth muscle isoforms are localized to the Z-disc and analogous dense bodies, where they help anchor the myofibrillar actin filaments. This gene encodes a muscle-specific, alpha actinin isoform that is expressed in both skeletal and cardiac muscles. Several transcript variants encoding different isoforms have been found for this gene.

## Application Notes

Optimal dilution of the recombinant Sarcomeric Alpha Actinin antibody should be determined by the researcher.

## Immunogen

A portion of amino acids 557-692 from the human protein was used as the immunogen for the recombinant Sarcomeric Alpha Actinin antibody.

## Storage

Aliquot the recombinant Sarcomeric Alpha Actinin antibody and store frozen at -20oC or colder. Avoid repeated freeze-thaw cycles.