

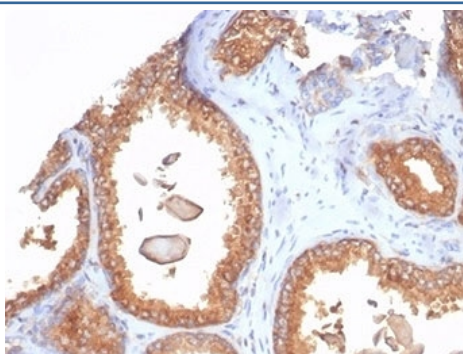
## Recombinant Beta-2 Microglobulin Antibody [clone rB2M/7279] (V9431)

Catalog No.	Formulation	Size
V9431-100UG	0.2 mg/ml in 1X PBS with 0.1 mg/ml BSA (US sourced), 0.05% sodium azide	100 ug
V9431-20UG	0.2 mg/ml in 1X PBS with 0.1 mg/ml BSA (US sourced), 0.05% sodium azide	20 ug
V9431SAF-100UG	1 mg/ml in 1X PBS; BSA free, sodium azide free	100 ug

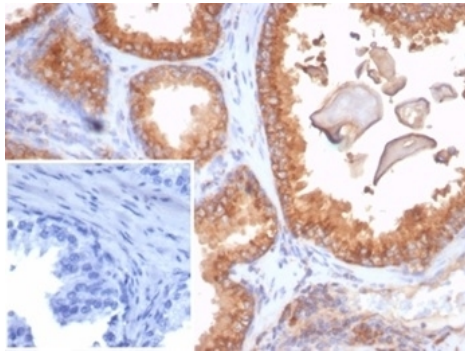
Recombinant **MOUSE MONOCLONAL**

[Bulk quote request](#)

Availability	1-3 business days
Species Reactivity	Human
Format	Purified
Clonality	Recombinant Mouse Monoclonal
Isotype	Mouse IgG1, kappa
Clone Name	rB2M/7279
Purity	Protein A affinity
UniProt	P61769
Localization	Cell Surface, Extracellular (Secreted)
Applications	Immunohistochemistry (FFPE) : 1-2ug/ml
Limitations	This recombinant Beta-2 Microglobulin antibody is available for research use only.



IHC staining of FFPE human prostate tissue with recombinant Beta-2 Microglobulin antibody (clone rB2M/7279). HIER: boil tissue sections in pH 9 10mM Tris with 1mM EDTA for 20 min and allow to cool before testing.



IHC staining of FFPE human prostate tissue with recombinant Beta-2 Microglobulin antibody (clone rB2M/7279). Negative control inset: PBS instead of primary antibody to control for secondary binding. HIER: boil tissue sections in pH 9 10mM Tris with 1mM EDTA for 20 min and allow to cool before testing.

## Description

Recognizes a protein of 12kDa, identified as beta-2 microglobulin. Major histocompatibility complex (MHC) class 1 molecules bind to antigens for presentation on the surface of cells. The proteasome is responsible for producing these antigens from the components of foreign pathogens. MHC class 1 molecules consist of an alpha heavy chain that contains three subdomains (alpha1, alpha2, alpha3) and a non-covalent associating light chain, known as beta-2-Microglobulin. Beta-2-Microglobulin associates with the alpha3 subdomain of the alpha heavy chain and forms an immunoglobulin domain-like structure that mediates proper folding and expression of MHC class 1 molecules. The alpha1 and alpha2 domains of the alpha heavy chain form the peptide antigen-binding cleft. Mutations in the beta-2-Microglobulin gene can enhance the progression of malignant melanoma phenotypes.

## Application Notes

Optimal dilution of the recombinant Beta-2 Microglobulin antibody should be determined by the researcher.

## Immunogen

Recombinant full-length human B2M protein was used as the immunogen for the recombinant Beta-2 Microglobulin antibody.

## Storage

Aliquot the recombinant Beta-2 Microglobulin antibody and store frozen at -20oC or colder. Avoid repeated freeze-thaw cycles.