

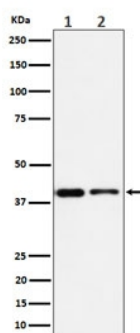
## STOML2 Antibody / Stomatin like 2 / SLP-2 [clone 28S56] (RQ8418)

| Catalog No. | Formulation  | Size   |
|-------------|--|--------|
| RQ8418      | Antibody in PBS with 0.02% sodium azide, 50% glycerol and 0.4-0.5mg/ml BSA | 100 ul |

Recombinant **RABBIT MONOCLONAL**

[Bulk quote request](#)

|                    |  |
|--------------------|--|
| Availability       | 1-3 business days  |
| Species Reactivity | Human, Mouse   |
| Format             | Purified   |
| Clonality          | Recombinant Rabbit Monoclonal                            |
| Isotype            | Rabbit IgG   |
| Clone Name         | 28S56  |
| Purity             | Affinity chromatography                                  |
| UniProt            | Q9UJZ1   |
| Applications       | Western blot : 1:500-1:2000                              |
| Limitations        | This STOML2 antibody is available for research use only. |



Western blot testing of 1) human Jurkat and 2) mouse RAW264.7 cell lysate with STOML2 antibody. Predicted molecular weight ~38 kDa.

## Description

Mitochondrial protein that probably regulates the biogenesis and the activity of mitochondria. [UniProt]

## Application Notes

Optimal dilution of the STOML2 antibody should be determined by the researcher.

## **Immunogen**

A synthetic peptide derived from human Stomatin like 2 was used as the immunogen for the STOML2 antibody.

## **Storage**

Store the STOML2 antibody at -20oC.