

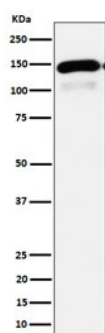
## Phospholipase C-beta-1 Antibody / PLCB1 [clone 28P54] (RQ8410)

Catalog No.	Formulation	Size
RQ8410	Antibody in PBS with 0.02% sodium azide, 50% glycerol and 0.4-0.5mg/ml BSA	100 ul

Recombinant **RABBIT MONOCLONAL**

[Bulk quote request](#)

Availability	1-3 business days
Species Reactivity	Human
Format	Purified
Clonality	Recombinant Rabbit Monoclonal
Isotype	Rabbit IgG
Clone Name	28P54
Purity	Affinity chromatography
UniProt	Q9NQ66
Applications	Western blot : 1:500-1:2000
Limitations	This Phospholipase C-beta-1 antibody is available for research use only.



Western blot testing of human HepG2 cell lysate with Phospholipase C-beta-1 antibody.  
Predicted molecular weight ~139 kDa.

## Description

Catalyzes the hydrolysis of 1-phosphatidylinositol 4,5-bisphosphate into diacylglycerol (DAG) and inositol 1,4,5-trisphosphate (IP3) and mediates intracellular signaling downstream of G protein-coupled receptors. [UniProt]

## Application Notes

Optimal dilution of the Phospholipase C-beta-1 antibody should be determined by the researcher.

## Immunogen

A synthetic peptide derived from human Phospholipase C-beta-1 protein was used as the immunogen for the Phospholipase C-beta-1 antibody.

## Storage

Store the Phospholipase C-beta-1 antibody at -20oC.