

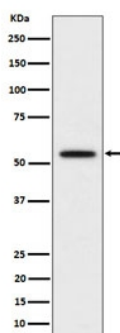
KATNA1 Antibody / Katanin p60 ATPase containing subunit A1 [clone 28K45] (RQ8378)

Catalog No.	Formulation	Size
RQ8378	Antibody in PBS with 0.02% sodium azide, 50% glycerol and 0.4-0.5mg/ml BSA	100 ul

Recombinant **RABBIT MONOCLONAL**

[Bulk quote request](#)

Availability	1-3 business days
Species Reactivity	Human
Format	Purified
Clonality	Recombinant Rabbit Monoclonal
Isotype	Rabbit IgG
Clone Name	28K45
Purity	Affinity chromatography
UniProt	O75449
Applications	Western blot : 1:500-1:2000
Limitations	This KATNA1 antibody is available for research use only.



Western blot testing of human Hela cell lysate with KATNA1 antibody. Predicted molecular weight ~56 kDa.

Description

Catalytic subunit of a complex which severs microtubules in an ATP-dependent manner. Microtubule severing may promote rapid reorganization of cellular microtubule arrays and the release of microtubules from the centrosome following nucleation. Microtubule release from the mitotic spindle poles may allow depolymerization of the microtubule end proximal to the spindle

pole, leading to poleward microtubule flux and poleward motion of chromosome. Microtubule release within the cell body of neurons may be required for their transport into neuronal processes by microtubule-dependent motor proteins. This transport is required for axonal growth. [UniProt]

Application Notes

Optimal dilution of the KATNA1 antibody should be determined by the researcher.

Immunogen

A synthetic peptide derived from human Katanin p60 ATPase containing subunit A1 was used as the immunogen for the KATNA1 antibody.

Storage

Store the KATNA1 antibody at -20oC.