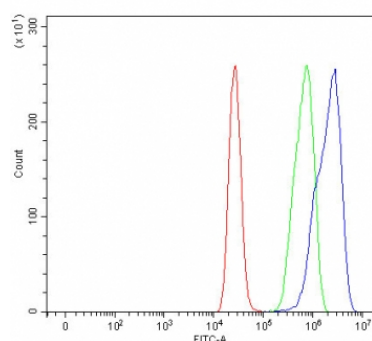


## Nardilysin Antibody / NRDC / NRD1 (RQ8325)

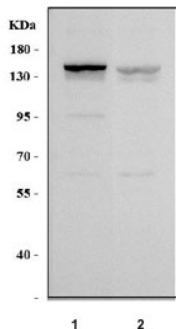
| Catalog No. | Formulation   | Size   |
|-------------|---|--------|
| RQ8325      | 0.5mg/ml if reconstituted with 0.2ml sterile DI water | 100 ug |

**Bulk quote request**

|                           |  |
|---------------------------|--|
| <b>Availability</b>       | 1-3 business days  |
| <b>Species Reactivity</b> | Human  |
| <b>Format</b>             | Antigen affinity purified  |
| <b>Clonality</b>          | Polyclonal (rabbit origin)   |
| <b>Isotype</b>            | Rabbit IgG   |
| <b>Purity</b>             | Antigen affinity purified  |
| <b>Buffer</b>             | Lyophilized from 1X PBS with 2% Trehalose  |
| <b>UniProt</b>            | O43847   |
| <b>Applications</b>       | Western blot : 0.5-1ug/ml<br>Flow cytometry : 1-3ug/million cells<br>Direct ELISA : 0.1-0.5ug/ml |
| <b>Limitations</b>        | This Nardilysin antibody is available for research use only.                                     |



Flow cytometry testing of fixed and permeabilized human MCF7 cells with Nardilysin antibody at 1ug/million cells (blocked with goat sera); Red=cells alone, Green=isotype control, Blue= Nardilysin antibody.



Western blot testing of human 1) K562 and 2) SiHa cell lysate with Nardilysin antibody.  
Predicted molecular weight ~132 kDa.

## Description

This gene encodes a zinc-dependent endopeptidase that cleaves peptide substrates at the N-terminus of arginine residues in dibasic moieties and is a member of the peptidase M16 family. This protein interacts with heparin-binding EGF-like growth factor and plays a role in cell migration and proliferation. Multiple transcript variants encoding different isoforms have been found for this gene.

## Application Notes

Optimal dilution of the Nardilysin antibody should be determined by the researcher.

## Immunogen

An E.coli-derived human recombinant protein (K427-R967) was used as the immunogen for the Nardilysin antibody.

## Storage

After reconstitution, the Nardilysin antibody can be stored for up to one month at 4oC. For long-term, aliquot and store at -20oC. Avoid repeated freezing and thawing.