

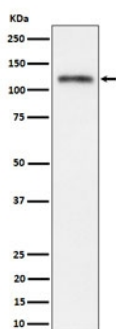
SEMA4D Antibody / Semaphorin 4D [clone 28S26] (RQ8289)

| Catalog No. | Formulation | Size |
|-------------|--|--------|
| RQ8289 | Antibody in PBS with 0.02% sodium azide, 50% glycerol and 0.4-0.5mg/ml BSA | 100 ul |

Recombinant **RABBIT MONOCLONAL**

[Bulk quote request](#)

| | |
|--------------------|--|
| Availability | 1-3 business days |
| Species Reactivity | Human |
| Format | Purified |
| Clonality | Recombinant Rabbit Monoclonal |
| Isotype | Rabbit IgG |
| Clone Name | 28S26 |
| Purity | Affinity chromatography |
| UniProt | Q92854 |
| Applications | Western blot : 1:500-1:2000 |
| Limitations | This SEMA4D antibody is available for research use only. |



Western blot testing of human SH-SY5Y cell lysate with SEMA4D antibody. Predicted molecular weight ~96 kDa, may be observed at higher molecular weights due to glycosylation.

Description

Semaphorin 4D (Sema 4D) is an axon guidance molecule which is secreted by oligodendrocytes and induces growth cone collapse in the central nervous system. By binding plexin B1 receptor it functions as an R-Ras GTPase-activating protein (GAP) and repels axon growth cones in both the mature central nervous system. [Wiki]

Application Notes

Optimal dilution of the SEMA4D antibody should be determined by the researcher.

Immunogen

A synthetic peptide derived from human Semaphorin 4D was used as the immunogen for the SEMA4D antibody.

Storage

Store the SEMA4D antibody at -20oC.