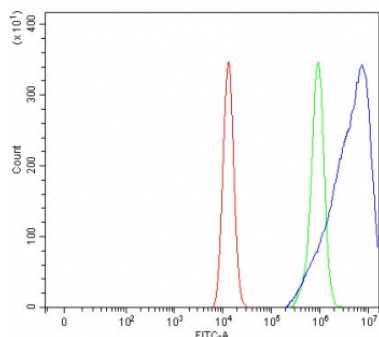


## PSD2 Antibody / PH and SEC7 domain-containing protein 2 (RQ8241)

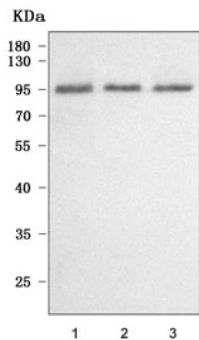
Catalog No.	Formulation	Size
RQ8241	0.5mg/ml if reconstituted with 0.2ml sterile DI water	100 ug

[Bulk quote request](#)

<b>Availability</b>	1-3 business days
<b>Species Reactivity</b>	Human
<b>Format</b>	Antigen affinity purified
<b>Clonality</b>	Polyclonal (rabbit origin)
<b>Isotype</b>	Rabbit IgG
<b>Purity</b>	Antigen affinity purified
<b>Buffer</b>	Lyophilized from 1X PBS with 2% Trehalose
<b>UniProt</b>	Q9BQI7
<b>Applications</b>	Western blot : 0.5-1ug/ml Flow cytometry : 1-3ug/million cells Direct ELISA : 0.1-0.5ug/ml
<b>Limitations</b>	This PSD2 antibody is available for research use only.



Flow cytometry testing of fixed and permeabilized human HEL cells with PSD2 antibody at 1ug/million cells (blocked with goat sera); Red=cells alone, Green=isotype control, Blue= PSD2 antibody.



Western blot testing of human 1) HEL, 2) SH-SY5Y and 3) U-2 OS cell lysate with PSD2 antibody. Predicted molecular weight ~85 kDa, commonly observed at 85-95 kDa.

## Description

Predicted to enable guanyl-nucleotide exchange factor activity and phospholipid binding activity. Predicted to be involved in regulation of ARF protein signal transduction and regulation of catalytic activity. Predicted to be located in cleavage furrow and ruffle membrane. Predicted to be active in glutamatergic synapse and postsynapse.

## Application Notes

Optimal dilution of the PSD2 antibody should be determined by the researcher.

## Immunogen

E. coli-derived recombinant human protein (amino acids G70-H756) was used as the immunogen for the PSD2 antibody.

## Storage

After reconstitution, the PSD2 antibody can be stored for up to one month at 4°C. For long-term, aliquot and store at -20°C. Avoid repeated freezing and thawing.