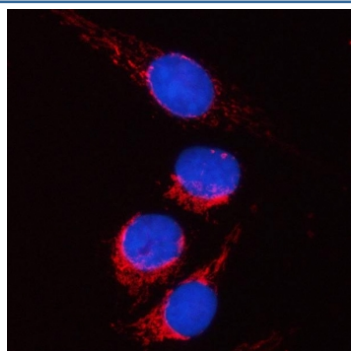


## PYCR2 Antibody / Pyrroline-5-carboxylate reductase 2 (RQ8211)

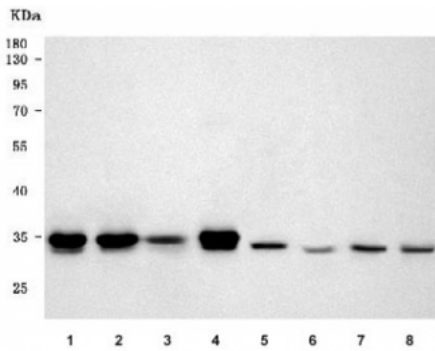
Catalog No.	Formulation	Size
RQ8211	0.5mg/ml if reconstituted with 0.2ml sterile DI water	100 ug

**Bulk quote request**

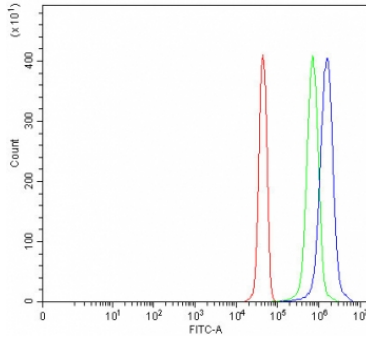
<b>Availability</b>	1-3 business days
<b>Species Reactivity</b>	Human, Mouse, Rat
<b>Format</b>	Antigen affinity purified
<b>Clonality</b>	Polyclonal (rabbit origin)
<b>Isotype</b>	Rabbit IgG
<b>Purity</b>	Antigen affinity purified
<b>Buffer</b>	Lyophilized from 1X PBS with 2% Trehalose
<b>UniProt</b>	Q96C36
<b>Localization</b>	Cytoplasm
<b>Applications</b>	Western blot : 0.5-1ug/ml Immunofluorescence : 5ug/ml Flow cytometry : 1-3ug/million cells Direct ELISA : 0.1-0.5ug/ml
<b>Limitations</b>	This PYCR2 antibody is available for research use only.



Immunofluorescent staining of FFPE human U-2 OS cells with PYCR2 antibody (red) and DAPI nuclear stain (blue). HIER: steam section in pH6 citrate buffer for 20 min.



Western blot testing of 1) human HeLa, 2) human Jurkat, 3) human ThP-1, 4) human K562, 5) rat brain, 6) rat thymus, 7) mouse brain and 8) mouse thymus tissue lysate with PYCR2 antibody. Predicted molecular weight ~34 kDa.



Flow cytometry testing of fixed and permeabilized human JK cells with PYCR2 antibody at 1ug/million cells (blocked with goat sera); Red=cells alone, Green=isotype control, Blue=PYCR2 antibody.

## Description

Pyrroline-5-carboxylate reductase family, member 2 is a protein that in humans is encoded by the PYCR2 gene. This gene belongs to the pyrroline-5-carboxylate reductase family. The encoded mitochondrial protein catalyzes the conversion of pyrroline-5-carboxylate to proline, which is the last step in proline biosynthesis. Alternatively spliced transcript variants have been described for this gene.

## Application Notes

Optimal dilution of the PYCR2 antibody should be determined by the researcher.

## Immunogen

E. coli-derived recombinant human protein (amino acids Q10-D320) was used as the immunogen for the PYCR2 antibody.

## Storage

After reconstitution, the PYCR2 antibody can be stored for up to one month at 4°C. For long-term, aliquot and store at -20°C. Avoid repeated freezing and thawing.