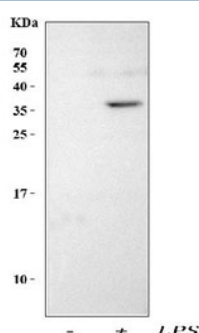


## Interleukin-1 beta Antibody / IL-1 beta (RQ7850)

Catalog No.	Formulation	Size
RQ7850	0.5mg/ml if reconstituted with 0.2ml sterile DI water	100 ug

[Bulk quote request](#)

<b>Availability</b>	1-3 business days
<b>Species Reactivity</b>	Mouse
<b>Format</b>	Antigen affinity purified
<b>Clonality</b>	Polyclonal (rabbit origin)
<b>Isotype</b>	Rabbit IgG
<b>Purity</b>	Antigen affinity purified
<b>Buffer</b>	Lyophilized from 1X PBS with 2% Trehalose
<b>UniProt</b>	P10749
<b>Applications</b>	Western blot : 0.5-1ug/ml Direct ELISA : 0.1-0.5ug/ml
<b>Limitations</b>	This Interleukin-1 beta antibody is available for research use only.



Western blot testing of lysate from LPS-treated and untreated mouse RAW264.7 cells using Interleukin-1 beta antibody. Predicted molecular weight ~31 kDa (precursor) and ~17 kDa (mature).

## Description

Interleukin-1b (IL-1b) is a potent stimulator of bone resorption whose gene is mapped to 2q14, and has been implicated in the pathogenesis of high bone turnover and osteoporosis. IL-1b, a prominent microglia-derived cytokine, caused oligodendrocyte death in coculture with astrocytes and microglia, but not in pure culture of oligodendrocytes alone. It also can cause nuclear

export of a specific NCOR corepressor complex, resulting in derepression of a specific subset of nuclear factor-kappa-B (NFkB)-regulated genes. Furthermore, microenvironmental IL-1b and, to a lesser extent, IL-1a are required for in vivo angiogenesis and invasiveness of different tumor cells. Additional, the cooperation of IL-1b and PDGFB induces contractile-to-synthetic phenotype modulation of human aortic smooth muscle cells in culture. Moreover, the association with disease may be explained by the biologic properties of IL-1b, which is an important proinflammatory cytokine and a powerful inhibitor of gastric acid secretion.

## Application Notes

Optimal dilution of the Interleukin-1 beta antibody should be determined by the researcher.

## Immunogen

E. coli-derived recombinant mouse protein (amino acids V118-S269) was used as the immunogen for the Interleukin-1 beta antibody.

## Storage

After reconstitution, the Interleukin-1 beta antibody can be stored for up to one month at 4oC. For long-term, aliquot and store at -20oC. Avoid repeated freezing and thawing.