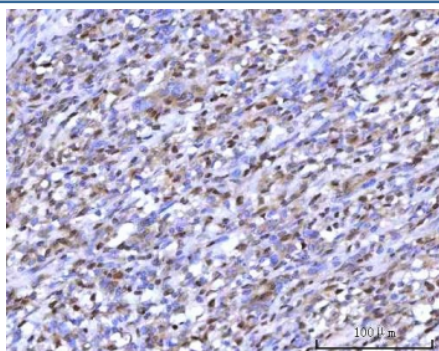


mRNA-capping enzyme Antibody / RNGTT / HCE (RQ7845)

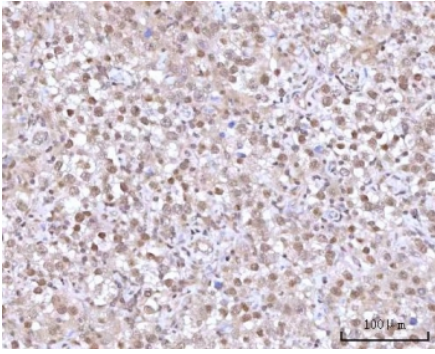
Catalog No.	Formulation	Size
RQ7845	0.5mg/ml if reconstituted with 0.2ml sterile DI water	100 ug

Bulk quote request

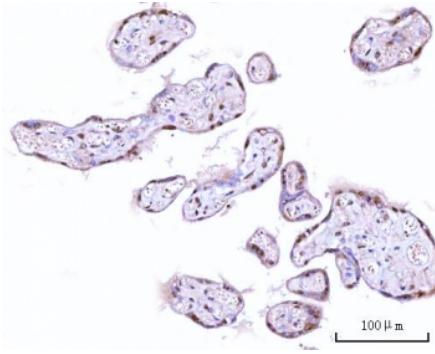
Availability	1-3 business days
Species Reactivity	Human
Format	Antigen affinity purified
Clonality	Polyclonal (rabbit origin)
Isotype	Rabbit IgG
Purity	Antigen affinity purified
Buffer	Lyophilized from 1X PBS with 2% Trehalose
UniProt	O60942
Localization	Nuclear
Applications	Western blot : 0.5-1ug/ml Immunohistochemistry (FFPE) : 2-5ug/ml Immunofluorescence : 5ug/ml Flow cytometry : 1-3ug/million cells Direct ELISA : 0.1-0.5ug/ml
Limitations	This mRNA-capping enzyme antibody is available for research use only.



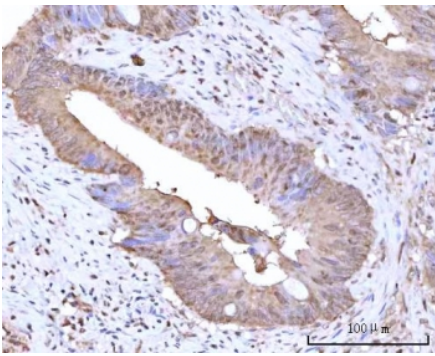
IHC staining of FFPE human intestine diffuse large B-cell lymphoma tissue with mRNA-capping enzyme antibody. HIER: boil tissue sections in pH8 EDTA for 20 min and allow to cool before testing.



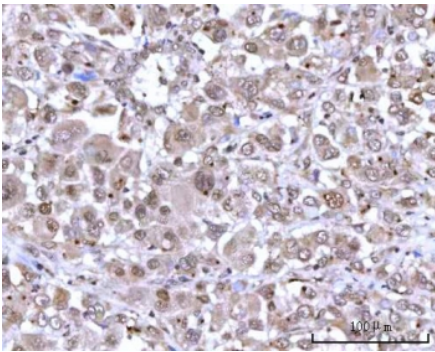
IHC staining of FFPE human testicular seminoma tissue with mRNA-capping enzyme antibody. HIER: boil tissue sections in pH8 EDTA for 20 min and allow to cool before testing.



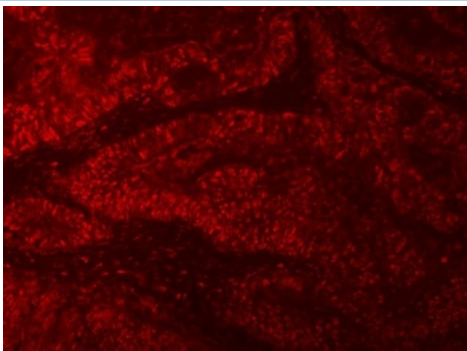
IHC staining of FFPE human placental tissue with mRNA-capping enzyme antibody. HIER: boil tissue sections in pH8 EDTA for 20 min and allow to cool before testing.



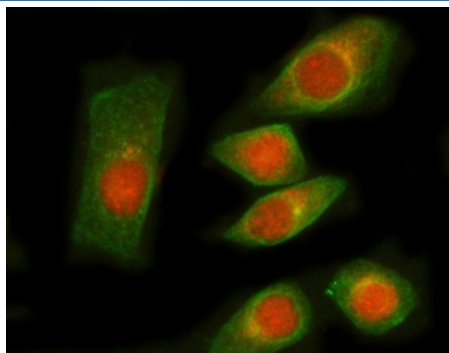
IHC staining of FFPE human rectum adenocarcinoma tissue with mRNA-capping enzyme antibody. HIER: boil tissue sections in pH8 EDTA for 20 min and allow to cool before testing.



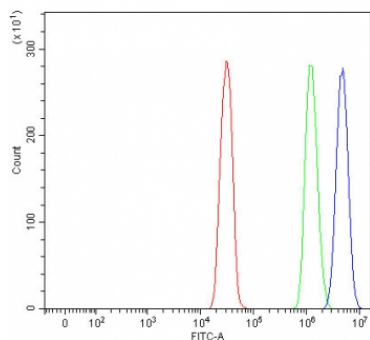
IHC staining of FFPE human lung adenocarcinoma tissue with mRNA-capping enzyme antibody. HIER: boil tissue sections in pH8 EDTA for 20 min and allow to cool before testing.



Immunofluorescent staining of FFPE human colon cancer tissue with mRNA-capping enzyme antibody (red). HIER: steam section in pH8 EDTA buffer for 20 min.



Immunofluorescent staining of FFPE human SiHa cells with mRNA-capping enzyme antibody (red) and Beta Tubulin mAb (green). HIER: steam section in pH6 citrate buffer for 20 min.



Flow cytometry testing of human SiHa cells with mRNA-capping enzyme antibody at 1ug/million cells (blocked with goat sera); Red=cells alone, Green=isotype control, Blue=mRNA-capping enzyme antibody.

Description

mRNA-capping enzyme is a protein that in humans is encoded by the RNGTT gene. Enables mRNA guanylyltransferase activity and triphosphatase activity. Involved in 7-methylguanosine mRNA capping. Predicted to be located in nucleoplasm.

Application Notes

Optimal dilution of the mRNA-capping enzyme antibody should be determined by the researcher.

Immunogen

E. coli-derived recombinant human protein (amino acids L11-D438) was used as the immunogen for the mRNA-capping enzyme antibody.

Storage

After reconstitution, the mRNA-capping enzyme antibody can be stored for up to one month at 4°C. For long-term, aliquot and store at -20°C. Avoid repeated freezing and thawing.