

## Villin Antibody / VIL1 [clone VIL1/7378R] (V4949)

Catalog No.	Formulation	Size
V4949-100UG	0.2 mg/ml in 1X PBS with 0.1 mg/ml BSA (US sourced), 0.05% sodium azide	100 ug
V4949-20UG	0.2 mg/ml in 1X PBS with 0.1 mg/ml BSA (US sourced), 0.05% sodium azide	20 ug
V4949SAF-100UG	1 mg/ml in 1X PBS; BSA free, sodium azide free	100 ug

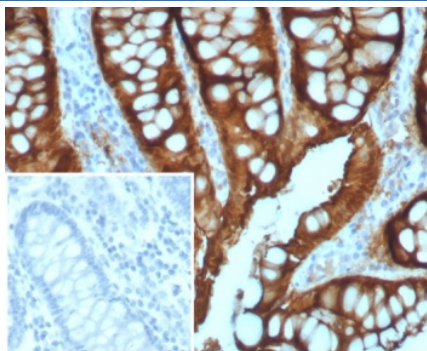
Recombinant **RABBIT MONOCLONAL**

[Bulk quote request](#)

Availability	1-3 business days
Species Reactivity	Human
Format	Purified
Clonality	Recombinant Rabbit Monoclonal
Isotype	Rabbit IgG, kappa
Clone Name	VIL1/7378R
Purity	Protein A/G affinity
UniProt	P09327
Localization	Cytoplasm, Cell Surface
Applications	Immunohistochemistry (FFPE) : 1-2ug/ml for 30 min at RT
Limitations	This Villin antibody is available for research use only.



IHC staining of FFPE human colon adenocarcinoma with Villin antibody (clone VIL1/7378R). HIER: boil tissue sections in pH 9 10mM Tris with 1mM EDTA for 20 min and allow to cool before testing.



IHC staining of FFPE human colon adenocarcinoma with Villin antibody (clone VIL1/7378R). Inset: PBS used in place of primary Ab (secondary Ab negative control).  
HIER: boil tissue sections in pH 9 10mM Tris with 1mM EDTA for 20 min and allow to cool before testing.

## Description

Recognizes a protein of 95kDa, which is identified as villin. It is a major constituent in the microvilli, which compose the brush border of epithelial cells forming absorptive surfaces of the intestinal and renal proximal tubular epithelia. Anti-Villin labels the brush border area in the gastrointestinal mucosal epithelium and urogenital tract. Among neoplasms, villin is predominantly expressed in tumors of colorectal origin. Antibody to villin is useful in identifying malignant cells from primary and metastatic colorectal carcinomas. This antibody also labels Merkel cells of the skin.

## Application Notes

Optimal dilution of the Villin antibody should be determined by the researcher.

## Immunogen

A recombinant partial protein sequence (within amino acids 600-700) from the human protein was used as the immunogen for the Villin antibody.

## Storage

Aliquot the Villin antibody and store frozen at -20°C or colder. Avoid repeated freeze-thaw cycles.