

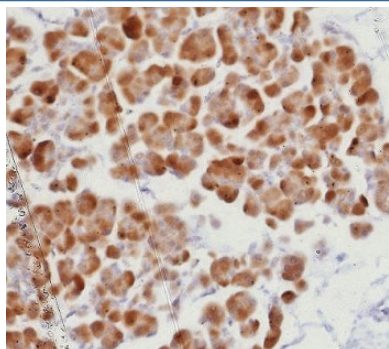
## Recombinant ROR gamma Antibody / RORC [clone RORC/8278R] (V4740)

Catalog No.	Formulation	Size
V4740-100UG	0.2 mg/ml in 1X PBS with 0.1 mg/ml BSA (US sourced), 0.05% sodium azide	100 ug
V4740-20UG	0.2 mg/ml in 1X PBS with 0.1 mg/ml BSA (US sourced), 0.05% sodium azide	20 ug
V4740SAF-100UG	1 mg/ml in 1X PBS; BSA free, sodium azide free	100 ug

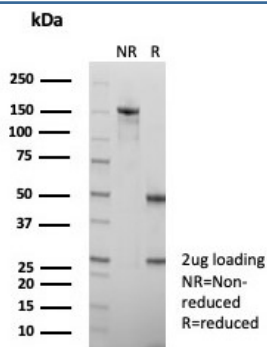
Recombinant **RABBIT MONOCLONAL**

[Bulk quote request](#)

Availability	1-3 business days
Species Reactivity	Human
Format	Purified
Clonality	Recombinant Rabbit Monoclonal
Isotype	Rabbit IgG, kappa
Clone Name	RORC/8278R
Purity	Protein A/G affinity
UniProt	P51449-2
Localization	Nucleus
Applications	Immunohistochemistry (FFPE) : 1-2ug/ml for 30 min at RT
Limitations	This recombinant ROR gamma antibody is available for research use only.



IHC staining of FFPE human pancreas tissue with recombinant ROR gamma antibody (clone RORC/8278R). HIER: boil tissue sections in pH 9 10mM Tris with 1mM EDTA for 20 min and allow to cool before testing.



SDS-PAGE analysis of purified, BSA-free recombinant ROR gamma antibody (clone RORC/8278R) as confirmation of integrity and purity.

## Description

Retina-associated orphan receptors (RORs) contains three subtypes: RORAlpha, RORBeta, and RORGamma. They are widely distributed in body tissues, and most of them can directly enter the nucleus to regulate the transcription of target genes, thus showing different tissue specificity and participating in different physiological processes. In particular, RORAlpha and RORGamma play an important role in mediating Th17 cell differentiation. RORGamma can be divided into RORGamma1 and RORGamma2 (RORGamma T), which show different tissue specificity. ROR Gamma (T) is expressed only in lymphoid compartment cells, i.e., CD4+CD8+ double positive thymocytes, peripheral Th17 cells, and lymphoid tissue inducer (LTi) cells of lymphoid organs. At present, RORGamma T is considered as a new target for drug development against autoimmune diseases, especially psoriasis. In recent years, RORGamma T small molecule inhibitors have become a hot research field in academia and even international pharmaceutical companies, with great development potential.

## Application Notes

Optimal dilution of the recombinant ROR gamma antibody should be determined by the researcher.

## Immunogen

Recombinant full-length human ROR gamma T protein was used as the immunogen for the recombinant ROR gamma antibody.

## Storage

Aliquot the recombinant ROR gamma antibody and store frozen at -20oC or colder. Avoid repeated freeze-thaw cycles.