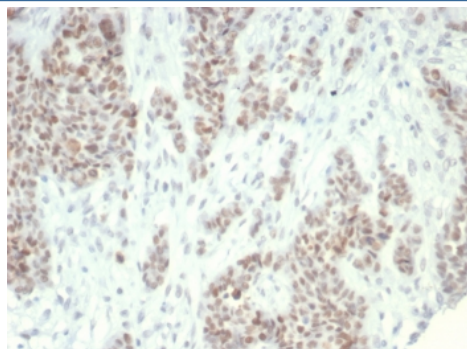


Lysine-Specific Demethylase 1 Antibody / KDM1A / LSD1 [clone PCRP-KDM1A-1A10] (V4694)

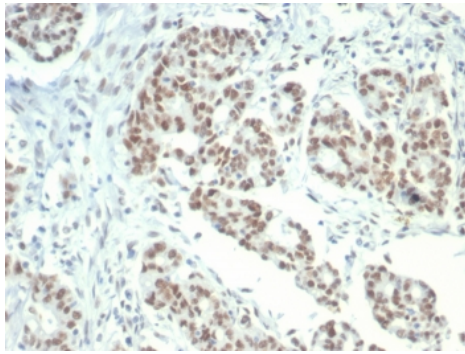
Catalog No.	Formulation	Size
V4694-100UG	0.2 mg/ml in 1X PBS with 0.1 mg/ml BSA (US sourced), 0.05% sodium azide	100 ug
V4694-20UG	0.2 mg/ml in 1X PBS with 0.1 mg/ml BSA (US sourced), 0.05% sodium azide	20 ug
V4694SAF-100UG	1 mg/ml in 1X PBS; BSA free, sodium azide free	100 ug

[Bulk quote request](#)

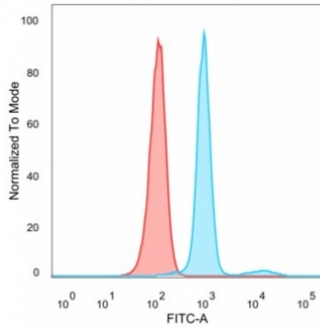
Availability	1-3 business days
Species Reactivity	Human
Format	Purified
Clonality	Monoclonal (mouse origin)
Isotype	Mouse IgG2a
Clone Name	PCRP-KDM1A-1A10
Purity	Protein A/G affinity
UniProt	O60341
Localization	Nucleus
Applications	Flow cytometry : 1-2ug/million cells Western blot : 1-2ug/ml Immunohistochemistry (FFPE) : 1-2ug/ml for 30 min at RT
Limitations	This Lysine-Specific Demethylase 1 antibody is available for research use only.



IHC staining of FFPE human ovarian carcinoma tissue with Lysine-Specific Demethylase 1 antibody (clone PCRP-KDM1A-1A10). HIER: boil tissue sections in pH 9 10mM Tris with 1mM EDTA for 20 min and allow to cool before testing.



IHC staining of FFPE human colon carcinoma tissue with Lysine-Specific Demethylase 1 antibody (clone PCRP-KDM1A-1A10). HIER: boil tissue sections in pH 9 10mM Tris with 1mM EDTA for 20 min and allow to cool before testing.



Flow cytometry testing of PFA-fixed human HeLa cells with Lysine-Specific Demethylase 1 antibody (clone PCRP-KDM1A-1A10) followed by goat anti-mouse IgG-CF488 (blue); Red = unstained cells.



Analysis of a HuProt(TM) microarray containing more than 19,000 full-length human proteins using Lysine-Specific Demethylase 1 antibody (clone PCRP-KDM1A-1A10). Z- and S- Score: The Z-score represents the strength of a signal that a monoclonal antibody (in combination with a fluorescently-tagged anti-IgG secondary antibody) produces when binding to a particular protein on the HuProt(TM) array. Z-scores are described in units of standard deviations (SD's) above the mean value of all signals generated on that array. If targets on HuProt(TM) are arranged in descending order of the Z-score, the S-score is the difference (also in units of SD's) between the Z-score. S-score therefore represents the relative target specificity of a mAb to its intended target. A mAb is considered to be specific to its intended target, if the mAb has an S-score of at least 2.5. For example, if a mAb binds to protein X with a Z-score of 43 and to protein Y with a Z-score of 14, then the S-score for the binding of that mAb to protein X is equal to 29.

Description

This gene encodes a nuclear protein containing a SWIRM domain, a FAD-binding motif, and an amine oxidase domain. This protein is a component of several histone deacetylase complexes, though it silences genes by functioning as a histone demethylase. Alternative splicing results in multiple transcript variants. [provided by RefSeq, Apr 2009]

Application Notes

Optimal dilution of the Lysine-Specific Demethylase 1 antibody should be determined by the researcher.

Immunogen

A recombinant partial protein sequence (within amino acids 152-279) from the human protein was used as the immunogen for the Lysine-Specific Demethylase 1 antibody.

Storage

Aliquot the Lysine-Specific Demethylase 1 antibody and store frozen at -20oC or colder. Avoid repeated freeze-thaw cycles.

