

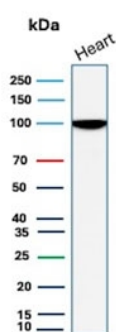
N-Cadherin Antibody / CDH2 / Cadherin 2 [clone CDH2/8998R] (V4538)

Catalog No.	Formulation	Size
V4538-100UG	0.2 mg/ml in 1X PBS with 0.1 mg/ml BSA (US sourced), 0.05% sodium azide	100 ug
V4538-20UG	0.2 mg/ml in 1X PBS with 0.1 mg/ml BSA (US sourced), 0.05% sodium azide	20 ug
V4538SAF-100UG	1 mg/ml in 1X PBS; BSA free, sodium azide free	100 ug

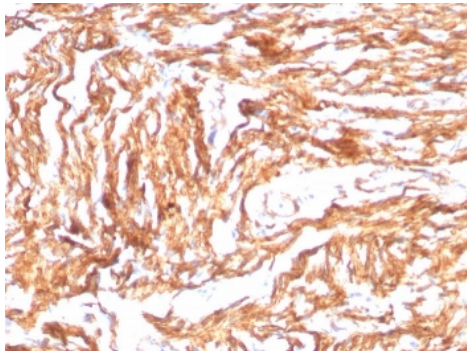
Recombinant **RABBIT MONOCLONAL**

[Bulk quote request](#)

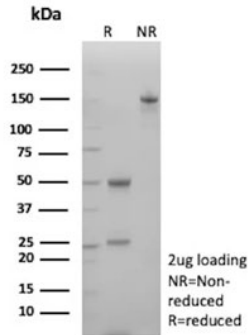
Availability	1-3 business days
Species Reactivity	Human
Format	Purified
Clonality	Recombinant Rabbit Monoclonal
Isotype	Rabbit IgG, kappa
Clone Name	CDH2/8998R
Purity	Protein A/G affinity
UniProt	P19022
Localization	Cell surface
Applications	Immunohistochemistry (FFPE) : 1-2ug/ml for 30 min at RT Western blot : 2-4ug/ml
Limitations	This N-Cadherin antibody is available for research use only.



Western blot testing of human heart tissue lysate with N-Cadherin antibody (clone CDH2/8998R). Predicted molecular weight ~100 kDa (unmodified), 125-140 kDa (modified).



IHC staining of FFPE human heart tissue with N-Cadherin antibody (clone CDH2/8998R).
HIER: boil tissue sections in pH 9 10mM Tris with 1mM EDTA for 20 min and allow to cool before testing.



SDS-PAGE analysis of purified, BSA-free N-Cadherin antibody (clone CDH2/8998R) as confirmation of integrity and purity.

Description

Recognizes a protein of ~140kDa, identified as N-Cadherin (NCAD), also known as CD325. NCAD is a member of the Cadherin superfamily, and consists of five extracellular repeats, a transmembrane domain and a cytoplasmic domain. CD325 deficient mice die at day 10 of gestation and embryos display major heart defects and malformed neural tubes and somites. Consistent with this, CD325 has been implicated in several aspects of cardiac development including the precardiac mesoderm, establishment of left-right symmetry and cardiac looping morphogenesis. Furthermore, CD325 is normally involved in inducing cell cycle arrest and its expression is frequently deregulated in cancer cells. Studies have linked N-cadherin to cancer metastasis by showing the aggressive tumor cells had preferentially turned on N-cadherin as opposed to E- or P-cadherin.

Application Notes

Optimal dilution of the N-Cadherin antibody should be determined by the researcher.

Immunogen

A recombinant partial protein sequence (within amino acids 605-905) from the human protein was used as the immunogen for the N-Cadherin antibody.

Storage

Aliquot the N-Cadherin antibody and store frozen at -20oC or colder. Avoid repeated freeze-thaw cycles.