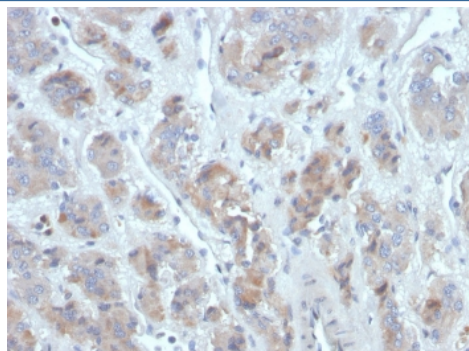


## CCL18 Antibody / PARC [clone CCL18/3744] (V4465)

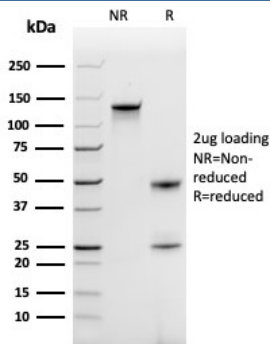
Catalog No.	Formulation	Size
V4465-100UG	0.2 mg/ml in 1X PBS with 0.1 mg/ml BSA (US sourced), 0.05% sodium azide	100 ug
V4465-20UG	0.2 mg/ml in 1X PBS with 0.1 mg/ml BSA (US sourced), 0.05% sodium azide	20 ug
V4465SAF-100UG	1 mg/ml in 1X PBS; BSA free, sodium azide free	100 ug

[Bulk quote request](#)

<b>Availability</b>	1-3 business days
<b>Species Reactivity</b>	Human
<b>Format</b>	Purified
<b>Clonality</b>	Monoclonal (mouse origin)
<b>Isotype</b>	Mouse IgG
<b>Clone Name</b>	CCL18/3744
<b>Purity</b>	Protein A affinity
<b>UniProt</b>	P55774
<b>Localization</b>	Secreted
<b>Applications</b>	Immunohistochemistry (FFPE) : 1-2ug/ml for 30 minutes at RT
<b>Limitations</b>	This CCL18 antibody is available for research use only.



IHC staining of FFPE human adrenal gland tissue with CCL18 antibody (clone CCL18/3744). HIER: boil tissue sections in pH 9 10mM Tris with 1mM EDTA for 20 min and allow to cool before testing.



SDS-PAGE analysis of purified, BSA-free CCL18 antibody (clone CCL18/3744) as confirmation of integrity and purity.

## Description

Chemokines are members of a superfamily of small inducible, secreted, proinflammatory cytokines. Members of the chemokine family exhibit 20 to 50% homology in their predicted amino acid sequences and are divided into four subfamilies. In C-C (or b) subfamily, the first two cysteines are adjacent. C-C chemokines are chemoattractants and activators for monocytes and T cells. C-C subfamily members include macrophage inflammatory protein (MIP)-1a, MIP-1b, MIP-2, MIP-3a, MIP-3b, MIP-4, HCC-1, MIP-5 (or HCC-2), RANTES, MCP-1/2/3 (and the murine homologs JE and MARC), I-309, murine C10 and TCA3. MIP-4 is constitutively expressed in several normal tissues and is highly expressed in plasma.

## Application Notes

Optimal dilution of the CCL18 antibody should be determined by the researcher.

## Immunogen

A recombinant partial protein sequence (within amino acids 1-89) from the human protein was used as the immunogen for the CCL18 antibody.

## Storage

Aliquot the CCL18 antibody and store frozen at -20°C or colder. Avoid repeated freeze-thaw cycles.