

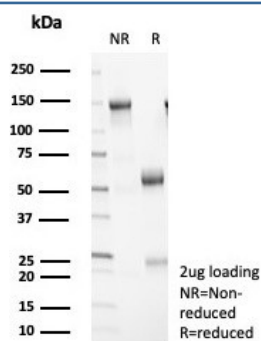
14-3-3 epsilon Antibody / YWHAE [clone YWHAE/8309R] (V4463)

Catalog No.	Formulation	Size
V4463-100UG	0.2 mg/ml in 1X PBS with 0.1 mg/ml BSA (US sourced), 0.05% sodium azide	100 ug
V4463-20UG	0.2 mg/ml in 1X PBS with 0.1 mg/ml BSA (US sourced), 0.05% sodium azide	20 ug
V4463SAF-100UG	1 mg/ml in 1X PBS; BSA free, sodium azide free	100 ug

Recombinant **RABBIT MONOCLONAL**

[Bulk quote request](#)

Availability	1-3 business days
Species Reactivity	Human
Format	Purified
Clonality	Recombinant Rabbit Monoclonal
Isotype	Rabbit IgG, kappa
Clone Name	YWHAE/8309R
Purity	Protein A/G affinity
UniProt	P62268
Localization	Cytoplasm, Melanosome
Applications	Immunohistochemistry (FFPE) : 1-2ug/ml for 30 minutes at RT
Limitations	This 14-3-3 epsilon antibody is available for research use only.



SDS-PAGE analysis of purified, BSA-free 14-3-3 epsilon antibody (clone YWHAE/8309R) as confirmation of integrity and purity.

Description

Adapter protein implicated in the regulation of a large spectrum of both general and specialized signaling pathway. Binds to a large number of partners, usually by recognition of a phosphoserine or phosphothreonine motif. Binding generally results in the modulation of the activity of the binding partner. It interacts with CDC25 phosphatases, RAF1 and IRS1 proteins, suggesting its role in diverse biochemical activities related to signal transduction, such as cell division and regulation of insulin sensitivity. It has also been implicated in the pathogenesis of small cell lung cancer. The YWHAE gene which encodes 14-3-3E has also been identified as a possible susceptibility gene for schizophrenia.

Application Notes

Optimal dilution of the 14-3-3 epsilon antibody should be determined by the researcher.

Immunogen

Recombinant human full-length protein was used as the immunogen for the 14-3-3 epsilon antibody.

Storage

Aliquot the 14-3-3 epsilon antibody and store frozen at -20oC or colder. Avoid repeated freeze-thaw cycles.