

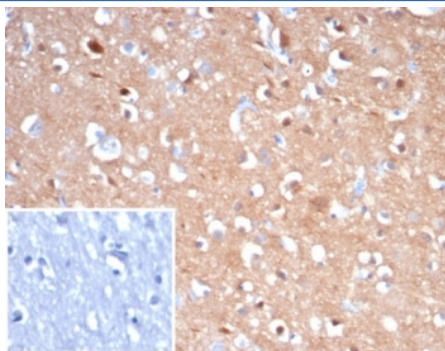
Recombinant TUBB3 Antibody / Beta Tubulin [clone rTUBB3/7405] (V4451)

Catalog No.	Formulation	Size
V4451-100UG	0.2 mg/ml in 1X PBS with 0.1 mg/ml BSA (US sourced), 0.05% sodium azide	100 ug
V4451-20UG	0.2 mg/ml in 1X PBS with 0.1 mg/ml BSA (US sourced), 0.05% sodium azide	20 ug
V4451SAF-100UG	1 mg/ml in 1X PBS; BSA free, sodium azide free	100 ug

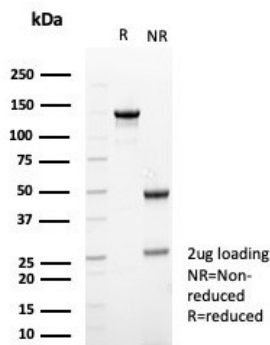
Recombinant **MOUSE MONOCLONAL**

[Bulk quote request](#)

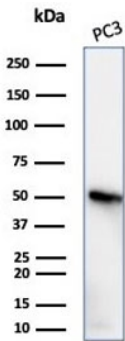
Availability	1-3 business days
Species Reactivity	Human
Format	Purified
Clonality	Recombinant Mouse Monoclonal
Isotype	Mouse IgG1, kappa
Clone Name	rTUBB3/7405
Purity	Protein A/G affinity
UniProt	Q13509
Localization	Cytoplasm
Applications	Western blot : 1-2ug/ml Immunohistochemistry (FFPE) : 1-2ug/ml for 30 minutes at RT
Limitations	This recombinant TUBB3 antibody is available for research use only.



IHC staining of FFPE human brain tissue with recombinant TUBB3 antibody (clone rTUBB3/7405). Inset: PBS used in place of primary Ab (secondary Ab negative control).
HIER: boil tissue sections in pH 9 10mM Tris with 1mM EDTA for 20 min and allow to cool before testing.



SDS-PAGE analysis of purified, BSA-free recombinant TUBB3 antibody (clone rTUBB3/7405) as confirmation of integrity and purity.



Western blot testing of human PC3 cell lysate with recombinant TUBB3 antibody (clone rTUBB3/7405). Predicted molecular weight ~50 kDa.

Description

This gene encodes a class III member of the beta tubulin protein family. Beta tubulins are one of two core protein families (alpha and beta tubulins) that heterodimerize and assemble to form microtubules. This protein is primarily expressed in neurons and may be involved in neurogenesis and axon guidance and maintenance. Mutations in this gene are the cause of congenital fibrosis of the extraocular muscles type 3. In adults, tubulin beta 3 (TUBB3) is primarily expressed in neurons and is commonly used as a neuronal marker. It plays an important role in neuronal cell proliferation and differentiation.

Application Notes

Optimal dilution of the recombinant TUBB3 antibody should be determined by the researcher.

Immunogen

A recombinant partial protein sequence (within amino acids 250-450) from the human protein was used as the immunogen for the recombinant TUBB3 antibody.

Storage

Aliquot the recombinant TUBB3 antibody and store frozen at -20oC or colder. Avoid repeated freeze-thaw cycles.