

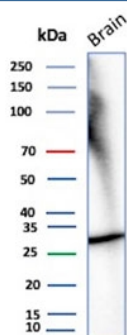
Recombinant CALB2 Antibody / Calretinin [clone rCALB2/7123] (V4448)

Catalog No.	Formulation	Size
V4448-100UG	0.2 mg/ml in 1X PBS with 0.1 mg/ml BSA (US sourced), 0.05% sodium azide	100 ug
V4448-20UG	0.2 mg/ml in 1X PBS with 0.1 mg/ml BSA (US sourced), 0.05% sodium azide	20 ug
V4448SAF-100UG	1 mg/ml in 1X PBS; BSA free, sodium azide free	100 ug

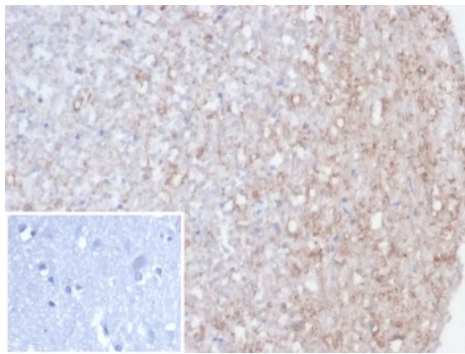
Recombinant **MOUSE MONOCLONAL**

[Bulk quote request](#)

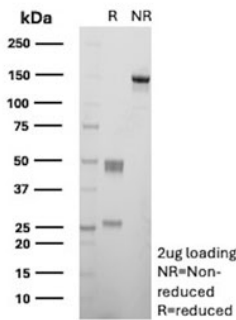
Availability	1-3 business days
Species Reactivity	Human
Format	Purified
Clonality	Recombinant Mouse Monoclonal
Isotype	Mouse IgG1, kappa
Clone Name	rCALB2/7123
Purity	Protein A affinity
UniProt	P22676
Localization	Cytoplasm, Nucleus
Applications	Immunohistochemistry (FFPE) : 1-2ug/ml for 30 min at RT Western blot : 2-4ug/ml
Limitations	This recombinant CALB2 antibody is available for research use only.



Western blot testing of human brain tissue lysate with recombinant CALB2 antibody.
Predicted molecular weight ~29 kDa.



IHC staining of FFPE human brain tissue with recombinant CALB2 antibody (clone rCALB2/7123). Inset: PBS instead of primary (secondary negative control). HIER: boil tissue sections in pH 9 10mM Tris with 1mM EDTA for 20 min and allow to cool before testing.



SDS-PAGE analysis of purified, BSA-free recombinant CALB2 antibody (clone rCALB2/7123) as confirmation of integrity and purity.

Description

It recognizes a protein of about 29kDa, which is identified as Calretinin (also known as Calbindin 2). Calretinin is a vitamin D-dependent calcium-binding protein involved in calcium signaling. It is present in subsets of neurons throughout the brain and spinal chord, including sensory ganglia. Antibody to calretinin is useful in differentiating mesothelioma from adenocarcinomas of the lung. It also aids in differentiating adrenal cortical neoplasms from pheochromocytomas.

Application Notes

Optimal dilution of the recombinant CALB2 antibody should be determined by the researcher.

Immunogen

A recombinant human protein fragment (within amino acids 23-242) was used as the immunogen for the recombinant CALB2 antibody.

Storage

Aliquot the recombinant CALB2 antibody and store frozen at -20oC or colder. Avoid repeated freeze-thaw cycles.