

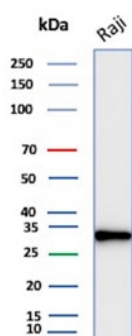
CD20 Antibody [clone rMS4A1/8044] (V4166)

Catalog No.	Formulation	Size
V4166-100UG	0.2 mg/ml in 1X PBS with 0.1 mg/ml BSA (US sourced), 0.05% sodium azide	100 ug
V4166-20UG	0.2 mg/ml in 1X PBS with 0.1 mg/ml BSA (US sourced), 0.05% sodium azide	20 ug
V4166SAF-100UG	1 mg/ml in 1X PBS; BSA free, sodium azide free	100 ug

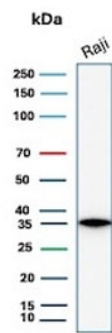
Recombinant **MOUSE MONOCLONAL**

[Bulk quote request](#)

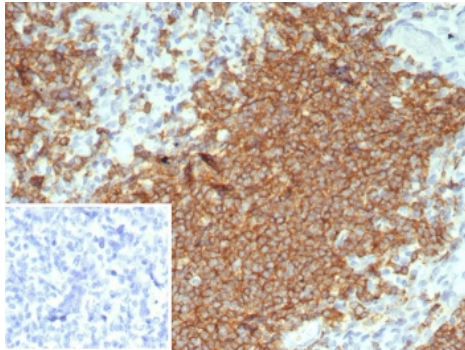
Availability	1-3 business days
Species Reactivity	Human
Format	Purified
Clonality	Recombinant Mouse Monoclonal
Isotype	Mouse IgG1, kappa
Clone Name	rMS4A1/8044
Purity	Protein A/G affinity
UniProt	P11836
Localization	Cell Surface
Applications	Immunohistochemistry (FFPE) : 1-2ug/ml for 30 min at RT Western blot : 2-4ug/ml
Limitations	This CD20 antibody is available for research use only.



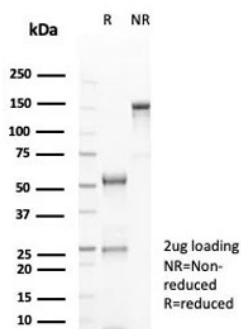
Western blot testing of human Raji cell lysate with CD20 antibody. Predicted molecular weight ~33 kDa.



Western blot testing of human Raji cell lysate with CD20 antibody. Predicted molecular weight ~33 kDa.



IHC staining of FFPE human tonsil tissue with CD20 antibody (clone rMS4A1/8044). Inset: PBS used in place of primary Ab (secondary Ab negative control). HIER: boil tissue sections in pH 9 10mM Tris with 1mM EDTA for 20 min and allow to cool before testing.



SDS-PAGE analysis of purified, BSA-free CD20 antibody (clone rMS4A1/8044) as confirmation of integrity and purity.

Description

Recognizes a protein of 30-33kDa, which is identified as CD20. It is a non-Ig differentiation antigen of B-cells and its expression is restricted to normal and neoplastic B-cells, being absent from all other leukocytes and tissues. CD20 is expressed by pre B-cells and persists during all stages of B-cell maturation but is lost upon terminal differentiation into plasma cells. This mAb can be used for immunophenotyping of leukemia and malignant cells, B lymphocyte detection in peripheral blood and B cell localization in tissues. It reacts with the majority of B-cells present in peripheral blood and lymphoid tissues and their derived lymphomas. In lymphoid tissue, germinal center blasts and B-immunoblasts are particularly reactive. It is a reliable antibody for ascribing a B-cell phenotype in known lymphoid tissues. Rarely, CD20-positive T-cell lymphomas have been reported. Reactivity has also been noted with Reed-Sternberg cells in cases of Hodgkin s disease, particularly of lymphocyte predominant type.

Application Notes

Optimal dilution of the CD20 antibody should be determined by the researcher.

Immunogen

A recombinant partial protein (within amino acids 200-297) from the human protein was used as the immunogen for the CD20

antibody.

Storage

Aliquot the CD20 antibody and store frozen at -20oC or colder. Avoid repeated freeze-thaw cycles.

Ordering:Phone:858.663.9055 | Fax:1.267.821.0800 | Email:info@nsjbio.com

Copyright © NSJ Bioreagents. All rights reserved