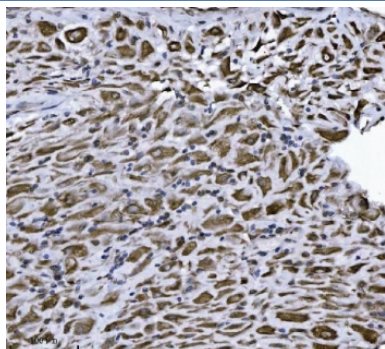


## ERLIN2 Antibody [clone 3H9A2] (RQ7117)

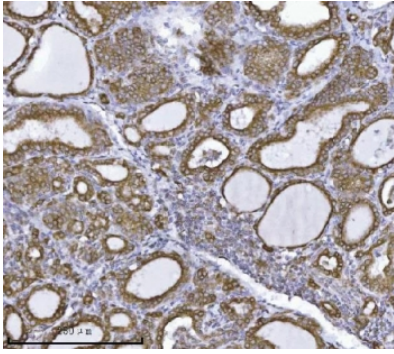
Catalog No.	Formulation	Size
RQ7117	0.5mg/ml if reconstituted with 0.2ml sterile DI water	100 ug

**Bulk quote request**

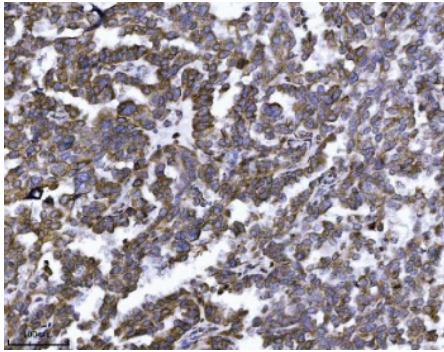
<b>Availability</b>	1-3 business days
<b>Species Reactivity</b>	Human
<b>Format</b>	Antigen affinity purified
<b>Clonality</b>	Monoclonal (mouse origin)
<b>Isotype</b>	Mouse IgG2b
<b>Clone Name</b>	3H9A2
<b>Purity</b>	Antigen affinity purified
<b>Buffer</b>	Lyophilized from 1X PBS with 2% Trehalose
<b>UniProt</b>	O94905
<b>Localization</b>	Cytoplasmic
<b>Applications</b>	Western blot : 0.5-1ug/ml Immunohistochemistry (FFPE) : 2-5ug/ml Immunofluorescence : 5ug/ml Flow cytometry : 1-3ug/million cells
<b>Limitations</b>	This ERLIN2 antibody is available for research use only.



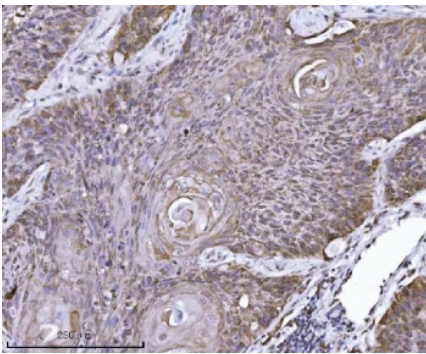
IHC staining of FFPE human placental tissue with ERLIN2 antibody. HIER: boil tissue sections in pH8 EDTA for 20 min and allow to cool before testing.



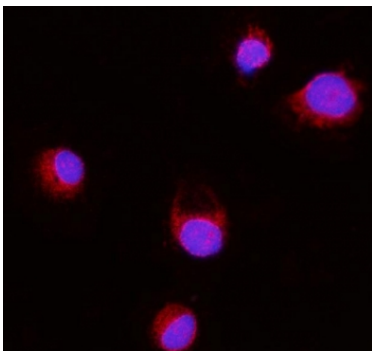
IHC staining of FFPE human thyroiditis tissue with ERLIN2 antibody. HIER: boil tissue sections in pH8 EDTA for 20 min and allow to cool before testing.



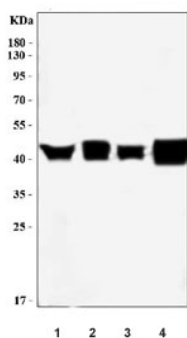
IHC staining of FFPE human ovarian serous carcinoma tissue with ERLIN2 antibody. HIER: boil tissue sections in pH8 EDTA for 20 min and allow to cool before testing.



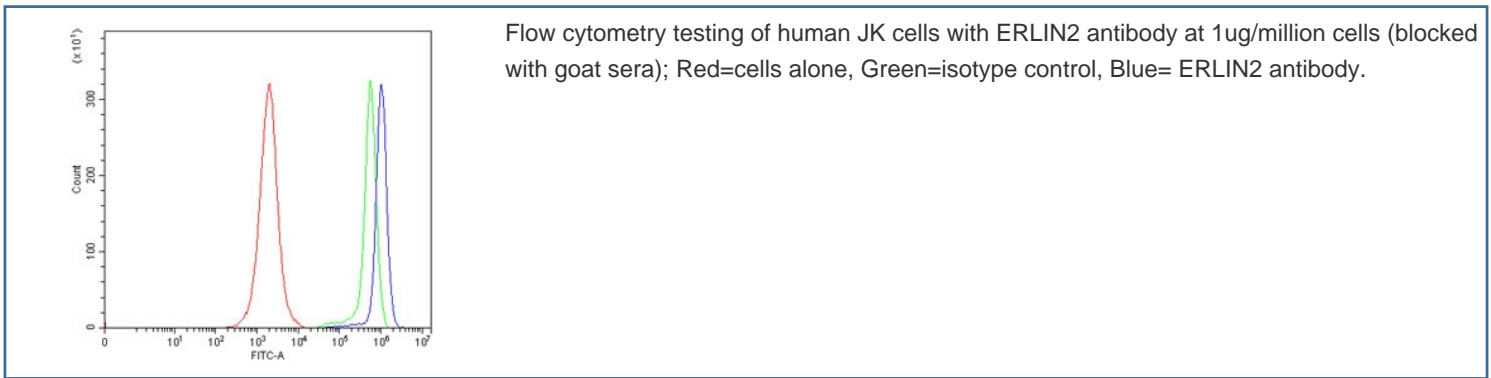
IHC staining of FFPE human squamous cell lung carcinoma tissue with ERLIN2 antibody. HIER: boil tissue sections in pH8 EDTA for 20 min and allow to cool before testing.



Immunofluorescent staining of FFPE human T-47D cells with ERLIN2 antibody (red) and DAPI nuclear stain (blue). HIER: steam section in pH6 citrate buffer for 20 min.



Western blot testing of human 1) HepG2, 2) T-47D, 3) HCCT and 4) HCCP cell lysate with ERLIN2 antibody. Predicted molecular weight ~38 kDa.



## Description

Erlin-2 is a protein that in humans is encoded by the ERLIN2 gene. This gene encodes a member of the SPFH domain-containing family of lipid raft-associated proteins. The encoded protein is localized to lipid rafts of the endoplasmic reticulum and plays a critical role in inositol 1,4,5-trisphosphate (IP3) signaling by mediating ER-associated degradation of activated IP3 receptors. Mutations in this gene are a cause of spastic paraplegia-18 (SPG18). Alternatively spliced transcript variants encoding multiple isoforms have been observed for this gene.

## Application Notes

Optimal dilution of the ERLIN2 antibody should be determined by the researcher.

## Immunogen

Recombinant human protein (amino acids D87-N339) was used as the immunogen for the ERLIN2 antibody.

## Storage

After reconstitution, the ERLIN2 antibody can be stored for up to one month at 4oC. For long-term, aliquot and store at -20oC. Avoid repeated freezing and thawing.