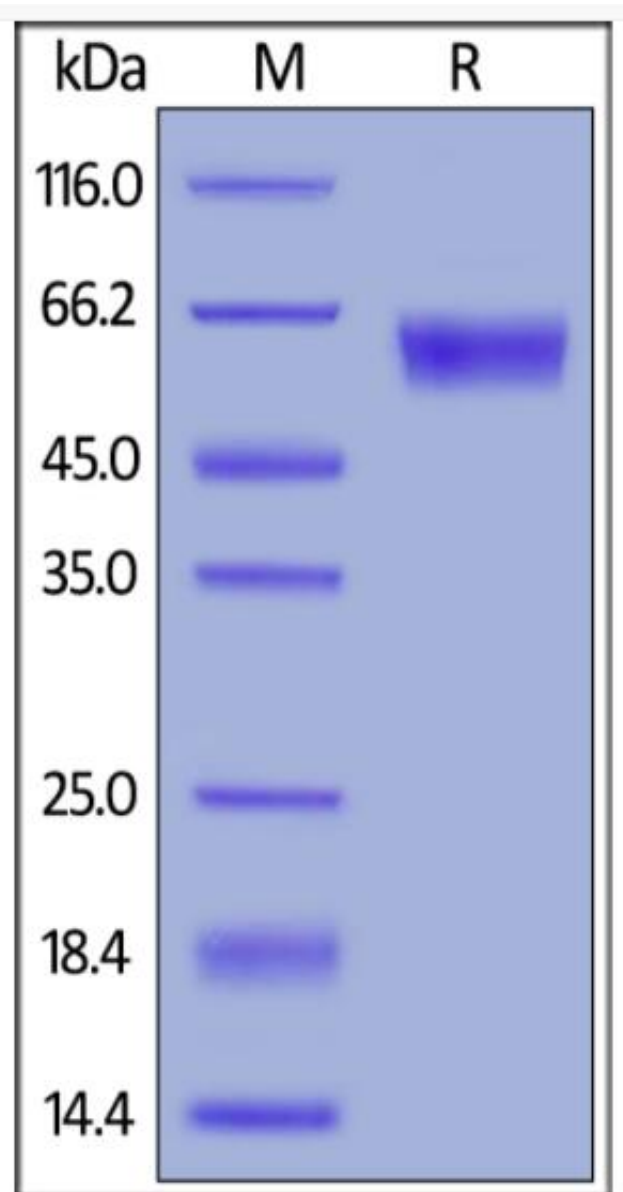


# Recombinant Mouse Pdcd1 protein, C-mFc Tag

## Product Information

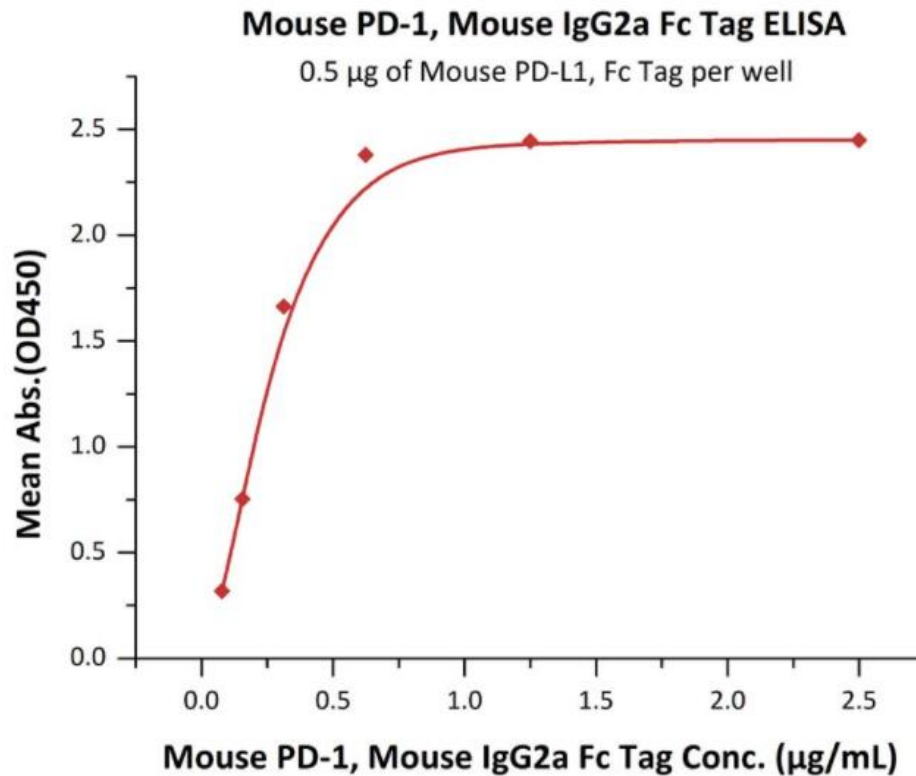
---

<b>Cat</b>	IMP-214
<b>Official Symbol</b>	Pdcd1
<b>Product Overview</b>	Recombinant Mouse Pdcd1 protein(AA Ser 21-Gln 167)(Accession # NP_032824) is expressed from human 293 cells (HEK293). This protein carries a mouse IgG2a Fc tag at the C-terminus.
<b>Expression System</b>	HEK293
<b>Species</b>	Mouse
<b>Tag</b>	C-mFc Tag
<b>Form</b>	Lyophilized from sterile PBS, pH7.4, 10% trehalose.
<b>Molecular Mass</b>	This protein carries a mouse IgG2a Fc tag at the C-terminus. The protein has a calculated MW of 43.7 kDa. The protein migrates as 55-66 kDa under reducing (R) condition (SDS-PAGE) due to glycosylation.
<b>Protein length</b>	Ser 21-Gln 167
<b>Endotoxin</b>	Less than 0.1 EU per ug by the LAL method.
<b>Purity</b>	>90% as determined by SDS-PAGE.
<b>Storage</b>	For long term storage, the product should be stored at lyophilized state at -20°C or lower. Please avoid repeated freeze-thaw cycles. This product is stable after storage at: -20°C to -70°C for 12 months in lyophilized state; -70°C for 3 months under sterile conditions after reconstitution.
<b>Reconstitution</b>	It is recommended that sterile water be added to the vial to prepare a stock solution of 0.2 mg/ml. Centrifuge the vial at 4°C before opening to recover the entire contents.
<b>SDS-PAGE</b>	



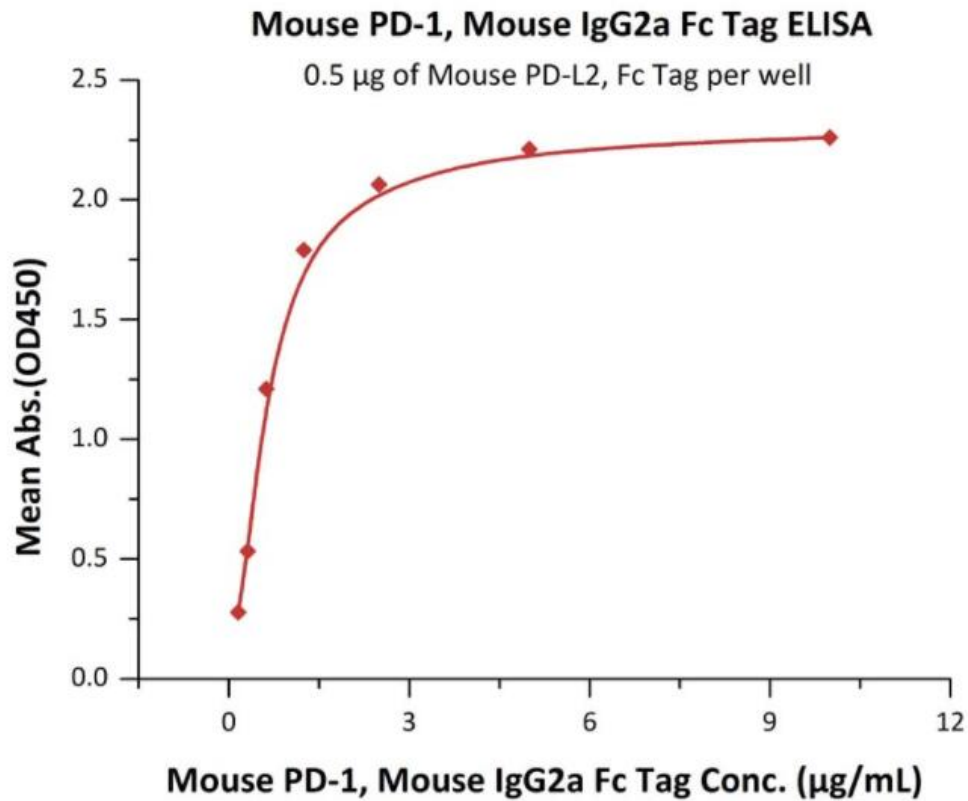
***Mouse PD-1, Mouse IgG2a Fc Tag on SDS-PAGE under reducing (R) condition. The gel was stained overnight with Coomassie Blue. The purity of the protein is greater than 90%.***

### **Bioactivity-ELISA 1**



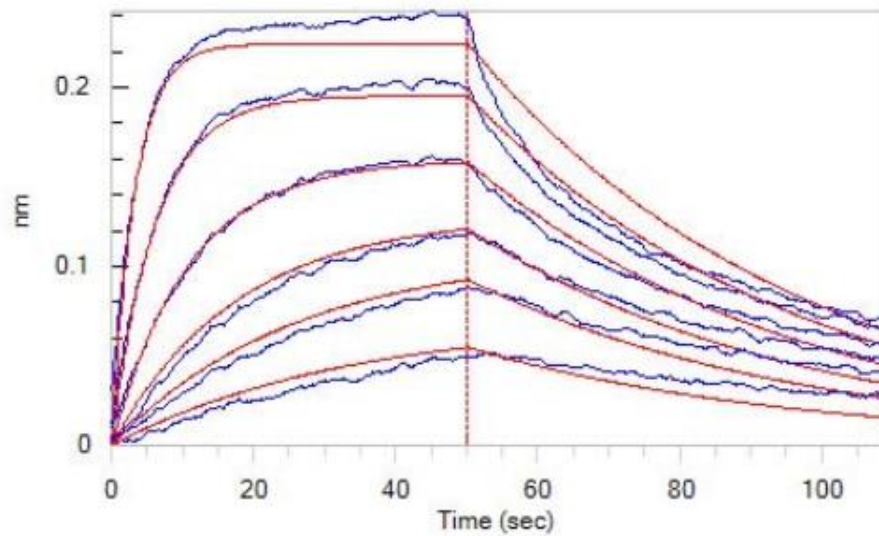
***Immobilized Mouse PD-L1, Fc Tag at 5 ug/mL (100 uL/well) can bind Mouse PD-1, Mouse IgG2a Fc Tag with a linear range of 0.078-0.313 ug/mL.***

## **Bioactivity-ELISA 2**



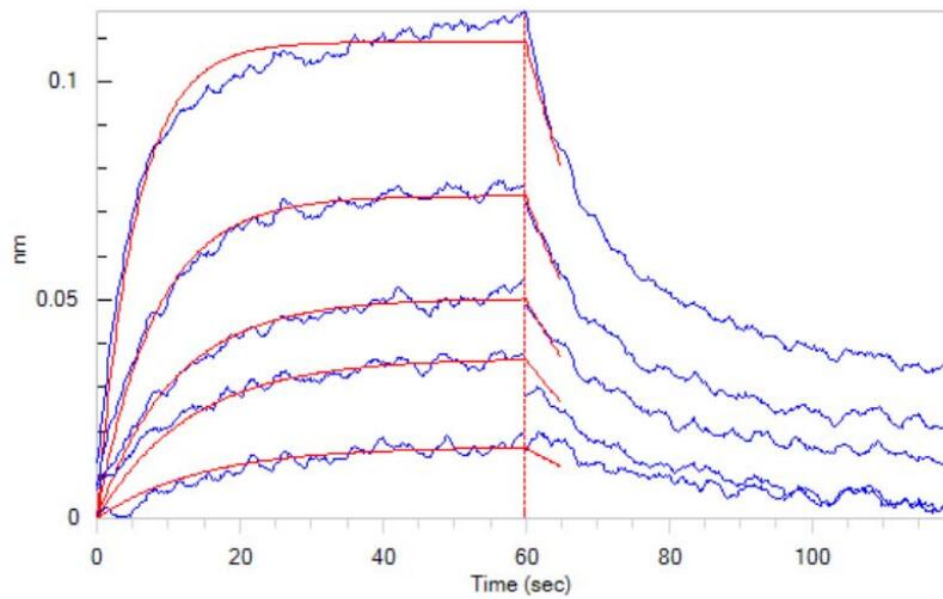
***Immobilized Mouse PD-L2, Fc Tag at 5 ug/mL (100 uL/well) can bind Mouse PD-1, Mouse IgG2a Fc Tag with a linear range of 0.078-0.625 ug/mL.***

***Bioactivity-BLI 1***



***Loaded Human PD-L1, Fc Tag (HPLC-verified) on AHC Biosensor, can bind Mouse PD-1, Mouse IgG2a Fc Tag with an affinity constant of 378 nM as determined in BLI assay (ForteBio Octet Red96e).***

## ***Bioactivity-BLI 2***



***Loaded Mouse PD-1, Mouse IgG2a Fc Tag on Protein A Biosensor, can bind Mouse PD-L2, His Tag with an affinity constant of 0.28  $\mu$ M as determined in BLI assay (ForteBio Octet Red96e).***