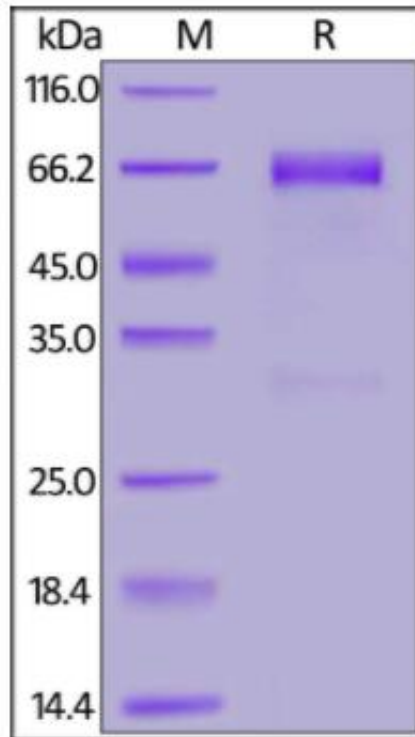


Recombinant Human SLAMF7 protein, C-Fc Tag

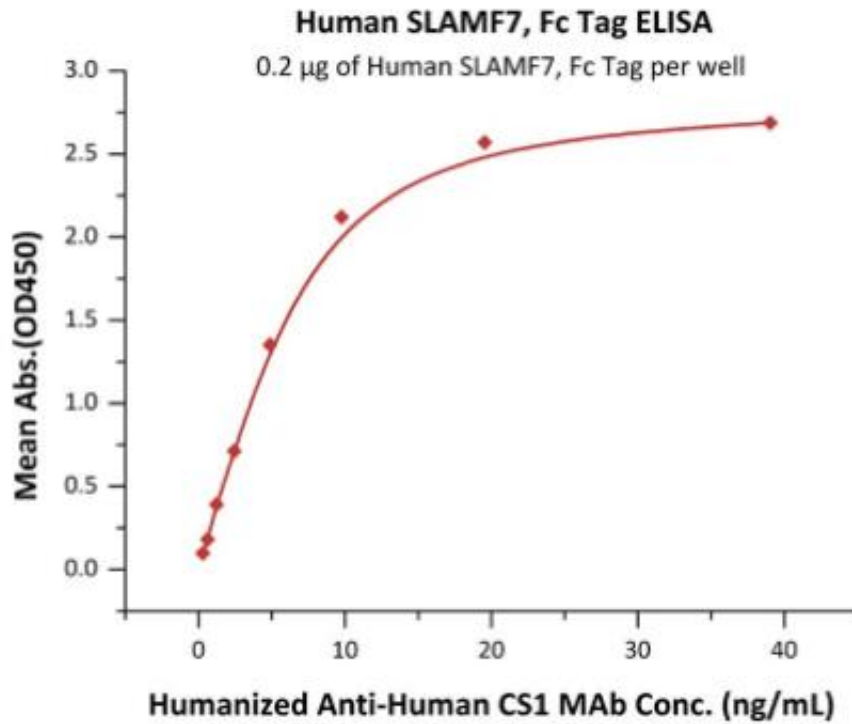
Product Information

Cat	IMP-019
Official Symbol	SLAMF7
Product Overview	Recombinant Human SLAMF7 protein(AA Ser 23-Met 226)(Accession # AAH27867) is expressed from human 293 cells (HEK293). This protein carries a human IgG1 Fc tag at the C-terminus.
Expression System	HEK293
Species	Human
Tag	C-Fc Tag
Form	Lyophilized from sterile Tris with Glycine, Arginine and NaCl, pH7.5, 10% trehalose.
Molecular Mass	This protein carries a human IgG1 Fc tag at the C-terminus. The protein has a calculated MW of 49.0 kDa. The protein migrates as 60-67 kDa under reducing (R) condition (SDS-PAGE) due to glycosylation.
Protein length	Ser 23-Met 226
Endotoxin	Less than 1.0 EU per ug by the LAL method.
Purity	>95% as determined by SDS-PAGE.
Storage	For long term storage, the product should be stored at lyophilized state at -20°C or lower. Please avoid repeated freeze-thaw cycles. This product is stable after storage at: -20°C to -70°C for 12 months in lyophilized state; -70°C for 3 months under sterile conditions after reconstitution.
Reconstitution	It is recommended that sterile water be added to the vial to prepare a stock solution of 0.2 mg/ml. Centrifuge the vial at 4°C before opening to recover the entire contents.
SDS-PAGE	



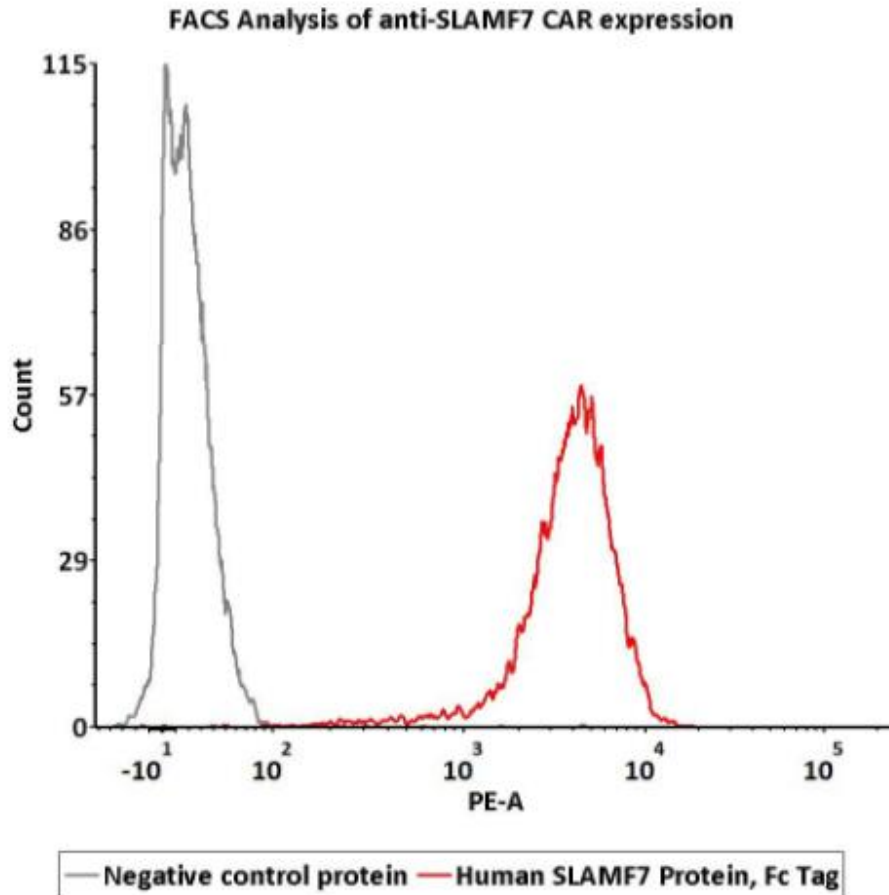
Human SLAMF7, Fc Tag on SDS-PAGE under reducing (R) condition. The gel was stained overnight with Coomassie Blue. The purity of the protein is greater than 95%.

Bioactivity-ELISA 1



Immobilized Human SLAMF7, Fc Tag at 2 μ g/mL (100 μ L/well) can bind Humanized Anti-Human CS1 MAb with a linear range of 0.3-5 ng/mL.

Bioactivity-FACS 1



2e5 of SLAMF7-CAR-293 cells transfected with anti-SLAMF7-scFv were stained with 100 μ L of 0.3 μ g/mL of Human SLAMF7, Fc Tag and negative control protein respectively, washed and then followed by PE anti-human IgG Fc antibody and analyzed with FACS.