

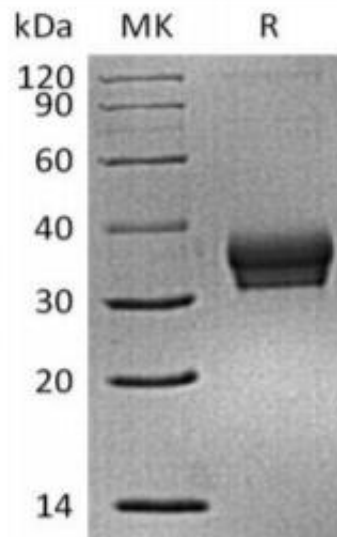
# Recombinant Mouse Siglec15 protein, C-His Tag

## Product Information

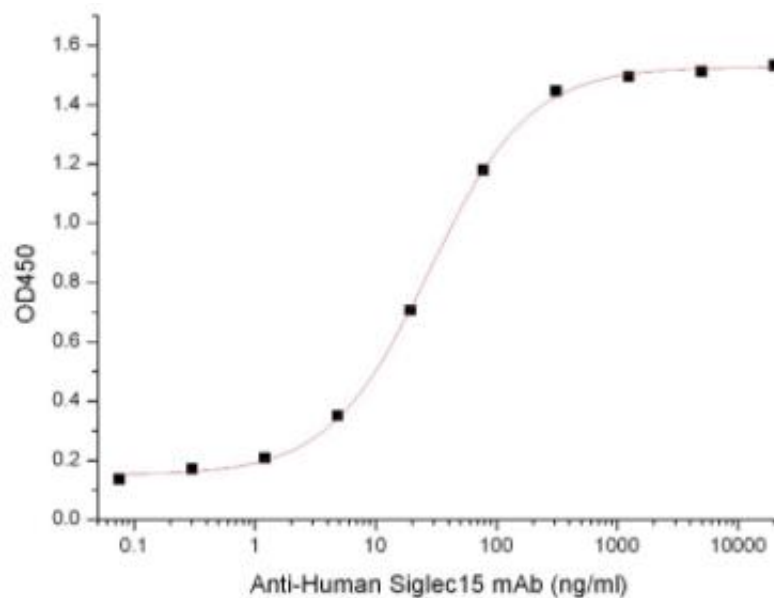
---

<b>Cat</b>	IMP-586
<b>Official Symbol</b>	Siglec15
<b>Product Overview</b>	Recombinant Mouse Siglec15(NP_001094508.1)(Arg24-Thr262) is expressed in HEK293, fused with a 6His tag at the C-terminus.
<b>Description</b>	Human Siglec-15 is a transmembrane glycoprotein in the Siglec family. Siglecs are type I transmembrane proteins where the NH <sub>3</sub> <sup>+</sup> -terminus is in the extracellular space and the COO <sup>-</sup> -terminus is cytosolic. Each Siglec contains an N-terminal V-type immunoglobulin domain (Ig domain) which acts as the binding receptor for sialic acid. These lectins are placed into the group of I-type lectins because the lectin domain is an immunoglobulin fold. All Siglecs are extended from the cell surface by C2-type Ig domains which have no binding activity. Siglecs differ in the number of these C2-type domains. Human Siglec-15 consists of a 244 amino acid (aa) extracellular domain (ECD) with two Ig-like domains, a 21 aa transmembrane segment, and a 44 aa cytoplasmic domain. Siglec-15 function is important for osteoclast formation and TRANCE/RANK Ligand signaling in osteoclasts
<b>Expression System</b>	HEK293
<b>Species</b>	Mouse
<b>Tag</b>	C-His Tag
<b>Form</b>	Lyophilized from a 0.2 µm filtered solution of PBS, 150mMNacl, 5%Thehalose, 0.3%chaps, Ph7.4.
<b>Molecular Mass</b>	30-40kDa, reducing conditions.
<b>Protein length</b>	Arg24-Thr262
<b>Endotoxin</b>	Less than 0.1 ng/ug (1 IEU/ug) as determined by LAL test.
<b>Purity</b>	Greater than 95% as determined by reducing SDS-PAGE.
<b>Storage</b>	Lyophilized protein should be stored at < -20°C, though stable at room temperature for 3 weeks.Reconstituted protein solution can be stored at 4-7°C for 2-7 days.Aliquots of reconstituted samples are stable at < -20°C for 3 months.
<b>Reconstitution</b>	Always centrifuge tubes before opening. Do not mix by vortex or pipetting.It is not recommended to reconstitute to a concentration less than 100 µg/ml.Dissolve the lyophilized protein in distilled water.Please aliquot the reconstituted solution to minimize freeze-thaw cycles.
<b>SDS-PAGE</b>	

---

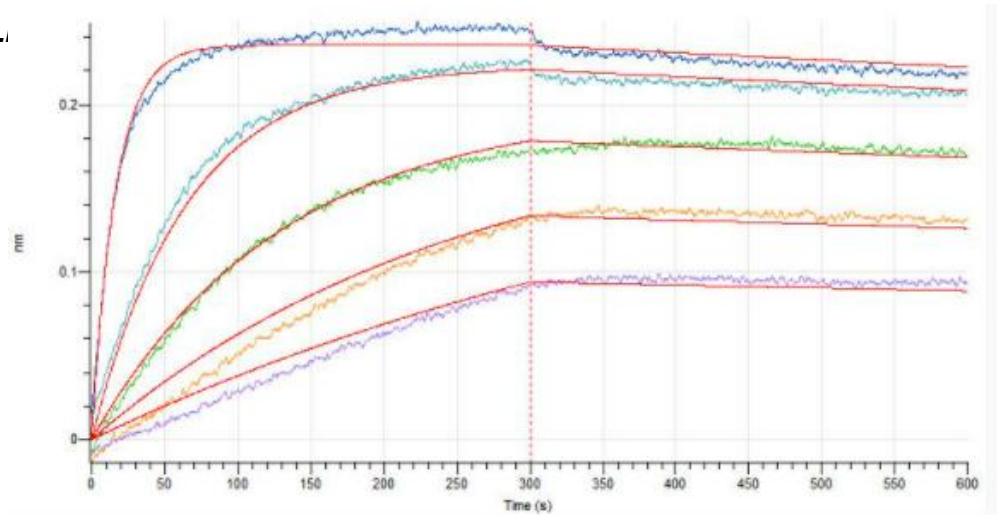


### **Bioactivity-ELISA 1**



***Immobilized Mouse Siglec-15-His at 2 $\mu$ g/ml (100  $\mu$ l/well) can bind Anti-Human Siglec15 mAb.  
The ED50 of Anti-Human Siglec15 mAb is 27.7 ng/ml.***

**Bioactivity-BL**



**Loaded Anti-Human Siglec15 mAb-mFc on AMQ Biosensor, can bind Mouse Siglec-15-His with an affinity constant of 0.33 nM as determined in BLI assay.**