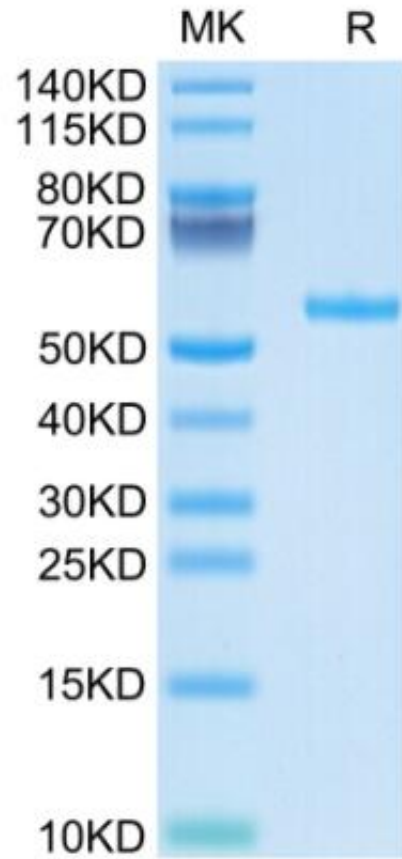


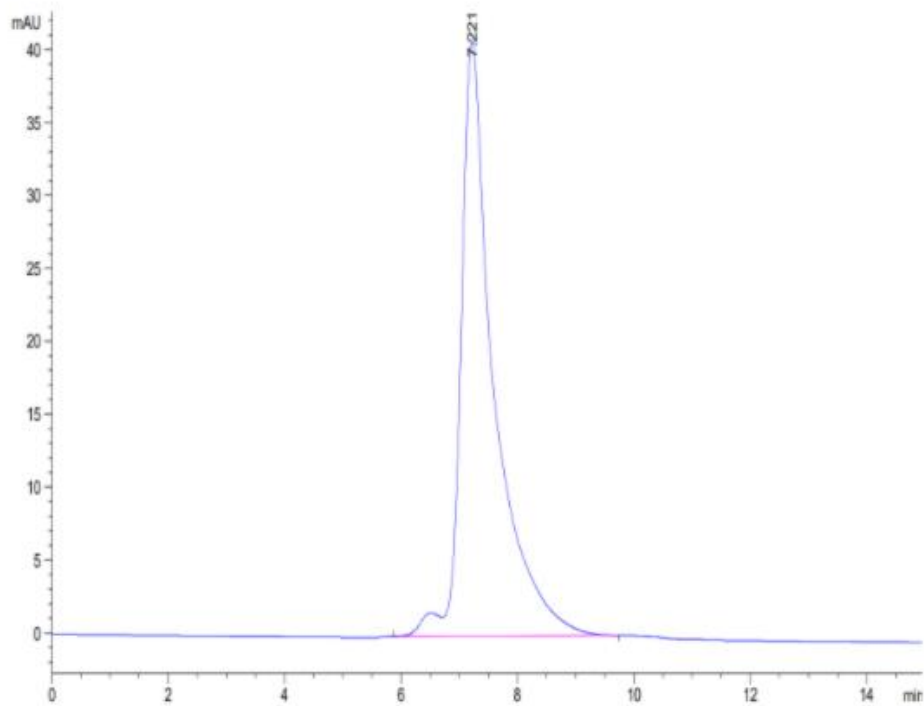
Recombinant Human HLA-A Complex protein(WT-1), C-His-Avi Tag, Biotinylated

Product Information

Cat	IMP-1636
Official Symbol	HLA-A
Product Overview	Biotinylated Recombinant Human HLA-A Complex protein(WT-1)(A0A140T913(HLA-A*02:01)&P61769(B2M)&RMFPNAPYL)(Gly25-Thr305(HLA-A*02:01),Ile21-Met119(B2M) and RMFPNAPYL peptide) is expressed from Expi293 with His tag and Avi tag at the C-terminal.
Expression System	HEK293
Species	Human
Tag	C-His-Avi Tag
Form	Supplied as 0.22µm filtered solution in PBS (pH 7.4). Please dilute to the desired concentration according to the concentration of the solution shown on the product label.
Molecular Mass	The protein has a predicted MW of 50.5 kDa. Due to glycosylation, the protein migrates to 55-60 kDa based on Tris-Bis PAGE result.
Protein length	It contains Gly25-Thr305(HLA-A*02:01),Ile21-Met119(B2M) and RMFPNAPYL peptide.
Endotoxin	Less than 1EU per µg by the LAL method.
Purity	> 95% as determined by Tris-Bis PAGE > 95% as determined by HPLC
Storage	Valid for 12 months from date of receipt when stored at -80°C. Recommend to aliquot the protein into smaller quantities for optimal storage. Please do not repeated freeze-thaw cycles.
Reconstitution	It is recommended that sterile water be added to the vial to prepare a stock solution of 0.2 ug/ul. Centrifuge the vial at 4°C before opening to recover the entire contents.
SDS-PAGE	



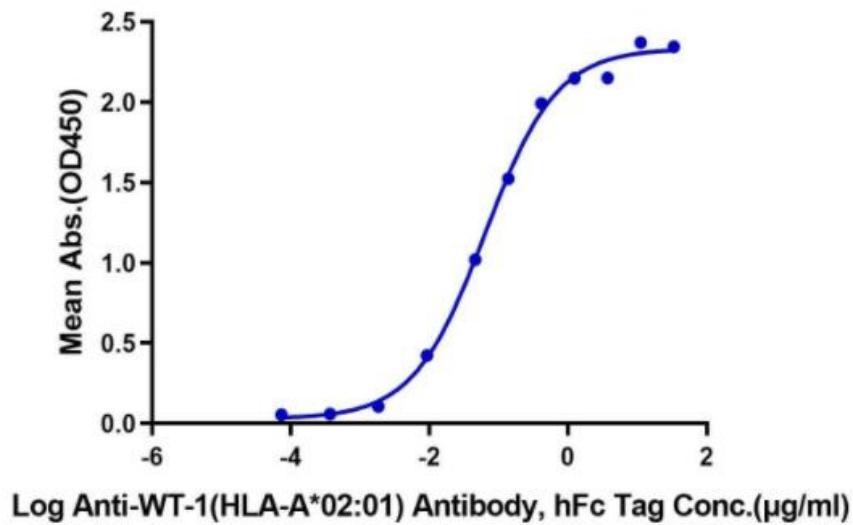
HPLC



Bioactivity-ELISA 1

Biotinylated Human WT-1 (HLA-A*02:01) Complex, His Tag ELISA

0.2µg Biotinylated Human WT-1 (HLA-A*02:01) Complex, His Tag Per Well



Immobilized Biotinylated Human WT-1 (HLA-A*02:01) Complex at 2µg/ml (100µl/Well) on the plate. Dose response curve for Anti-WT-1 (HLA-A*02:01) Antibody, hFc Tag with the EC50 of 63.3ng/ml determined by ELISA.