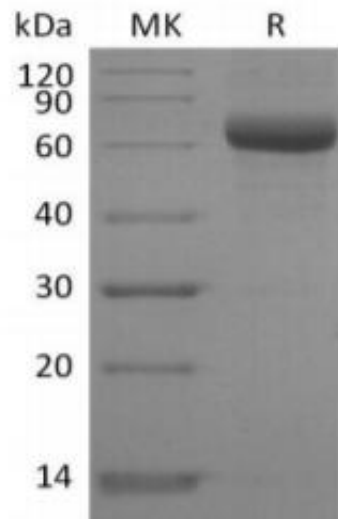


Recombinant Human SIGLEC15 protein, C-Fc-Avi Tag, Biotinylated

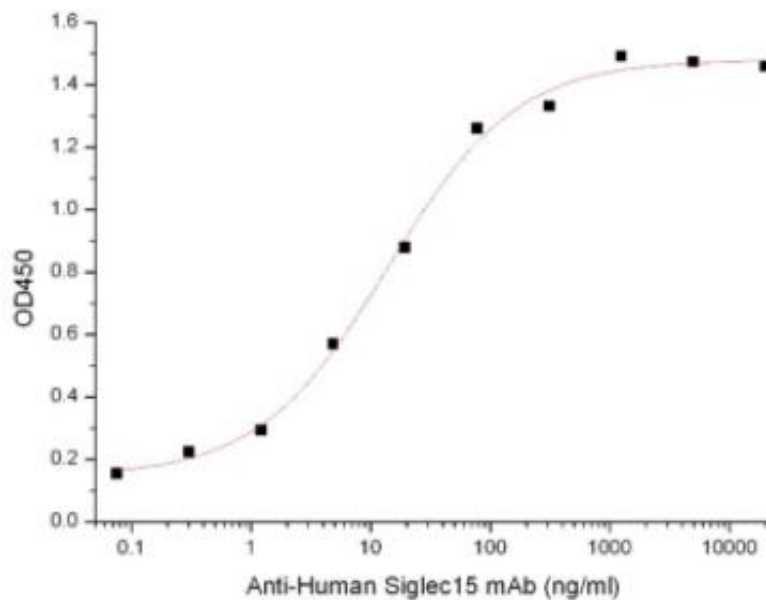
Product Information

Cat	IMP-588
Official Symbol	SIGLEC15
Product Overview	<i>Biotinylated Recombinant Human SIGLEC15(NP_998767.1)(Phe20-Thr263) is expressed in HEK293, fused with a Fc, Avi tag at the C-terminus.</i>
Description	<i>Human Siglec-15 is a transmembrane glycoprotein in the Siglec family. Siglecs are type I transmembrane proteins where the NH₃⁺-terminus is in the extracellular space and the COO⁻-terminus is cytosolic. Each Siglec contains an N-terminal V-type immunoglobulin domain (Ig domain) which acts as the binding receptor for sialic acid. These lectins are placed into the group of I-type lectins because the lectin domain is an immunoglobulin fold. All Siglecs are extended from the cell surface by C2-type Ig domains which have no binding activity. Siglecs differ in the number of these C2-type domains. Human Siglec-15 consists of a 244 amino acid (aa) extracellular domain (ECD) with two Ig-like domains, a 21 aa transmembrane segment, and a 44 aa cytoplasmic domain. Siglec-15 function is important for osteoclast formation and TRANCE/RANK Ligand signaling in osteoclasts</i>
Expression System	HEK293
Species	Human
Tag	C-Fc-Avi Tag
Form	<i>Lyophilized from a 0.2 μm filtered solution of PBS, 150mM NaCl, 0.3% Chaps, 5% Trehalose, pH 7.4.</i>
Molecular Mass	58-75kDa, reducing conditions.
Protein length	Phe20-Thr263
Endotoxin	<i>Less than 0.1 ng/ug (1 IEU/ug) as determined by LAL test.</i>
Purity	<i>Greater than 90% as determined by reducing SDS-PAGE.</i>
Storage	<i>Lyophilized protein should be stored at < -20°C, though stable at room temperature for 3 weeks. Reconstituted protein solution can be stored at 4-7°C for 2-7 days. Aliquots of reconstituted samples are stable at < -20°C for 3 months.</i>
Reconstitution	<i>Always centrifuge tubes before opening. Do not mix by vortex or pipetting. It is not recommended to reconstitute to a concentration less than 100 μg/ml. Dissolve the lyophilized protein in distilled water. Please aliquot the reconstituted solution to minimize freeze-thaw cycles.</i>

SDS-PAGE

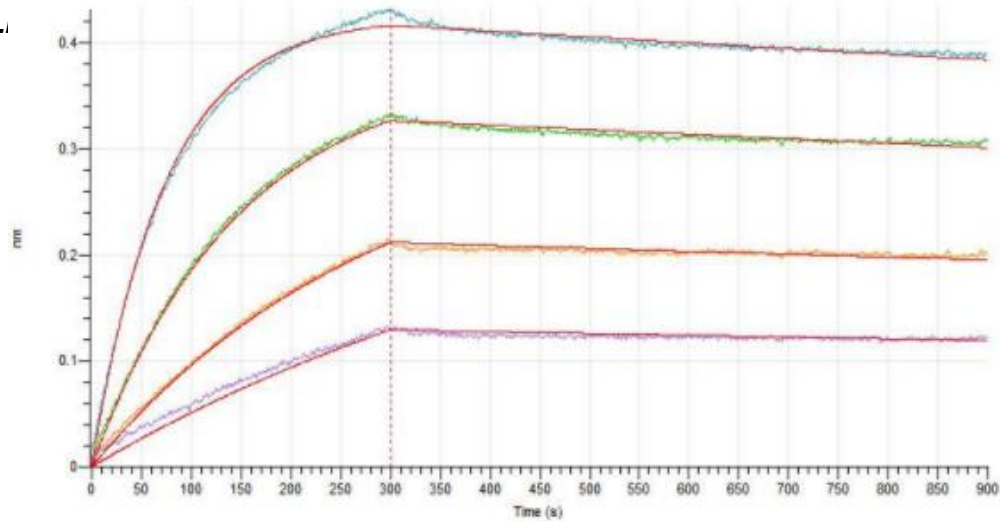


Bioactivity-ELISA 1



Immobilized Human Siglec-15-Fc-Avi at 2µg/ml (100 µl/well) can bind Anti-Human Siglec15 mAb. The ED50 of Anti-Human Siglec15 mAb is 13.7 ng/ml.

Bioactivity-BL



Loaded Human Siglec-15-Fc on AHC Biosensor, can bind Anti-Human Siglec15 mAb-mFc with an affinity constant of 0.13 nM as determined in BLI assay.