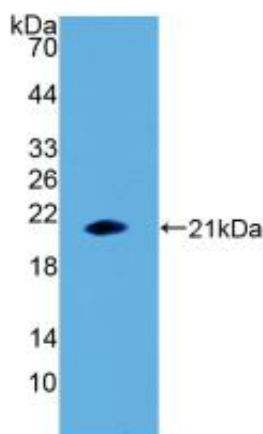


# Recombinant Human IL1b protein, N-His Tag

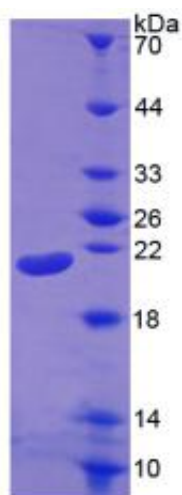
## Product Information

<b>Cat</b>	IMP-2857
<b>Official Symbol</b>	IL1b
<b>Product Overview</b>	Recombinant Human IL1b protein(P01584)(Ala117~Ser269), fused with N-terminal His Tag, was expressed in E. coli.
<b>Expression System</b>	E. coli
<b>Species</b>	Human
<b>Tag</b>	N-His Tag
<b>Form</b>	20mM Tris, 150mM NaCl, pH8.0, containing 1mM EDTA, 1mM DTT, 0.01% SKL, 5% Trehalose and Proclin300.
<b>Molecular Mass</b>	20kDa
<b>Protein length</b>	Gln21~Phe180
<b>Purity</b>	> 95%
<b>Storage</b>	Avoid repeated freeze/thaw cycles. Store at 2-8°C for one month. Aliquot and store at -80°C for 12 months.
<b>Reconstitution</b>	It is recommended that sterile water be added to the vial to prepare a stock solution of 0.2 ug/ul. Centrifuge the vial at 4°C before opening to recover the entire contents.

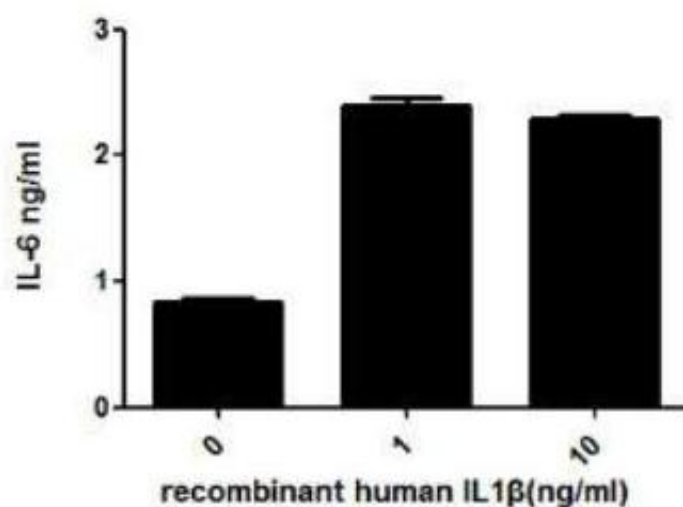
### Western Blot 1



## SDS-PAGE



## Bioactivity-ELISA



***IL-1 $\beta$  (Interleukin-1 beta) is a proinflammatory and immunoregulatory cytokine involved in a variety of cellular activities. It is produced by activated macrophages as a proprotein, and then proteolytically processed to an active form. It has been reported that IL-1 $\beta$ -induced IL-6 production is mediated by both PI3K and IRAK4 in A549 cells. To detect the bioactivity of IL-1 $\beta$ , A549 cells were seeded into 24-well plate at a density of  $1 \times 10^5$  cells/mL, and allowed to attach overnight before treated with or without certain concentrations (1 ng/mL, 10 ng/mL) of IL-1 $\beta$  for 4h and IL-6 levels in the cell supernatant were determined by ELISA.***