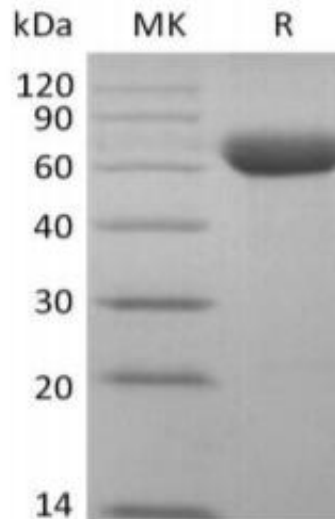


Recombinant Cynomolgus SIGLEC15 protein, C-Fc Tag

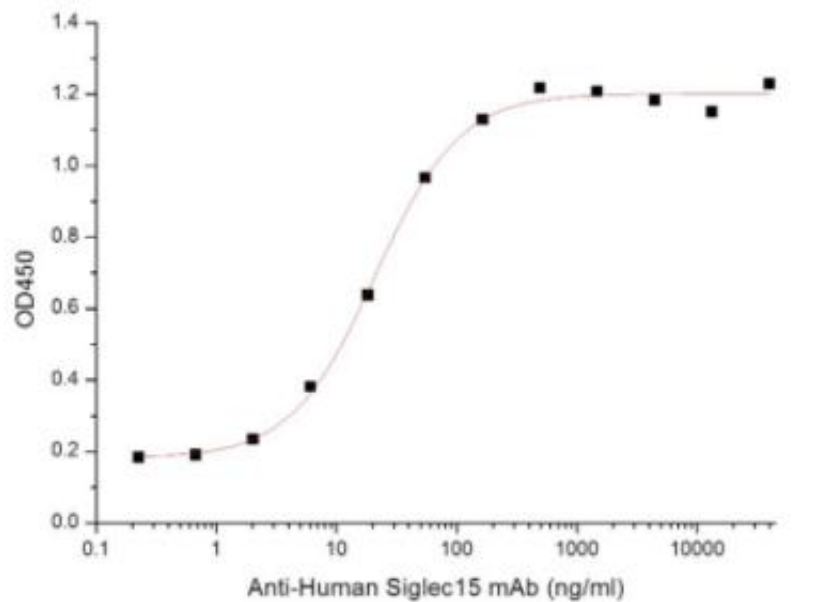
Product Information

Cat	IMP-559
Official Symbol	SIGLEC15
Product Overview	Recombinant Cynomolgus SIGLEC15(XP_005586866.1)(Phe20-Thr263) is expressed in HEK293, fused with a Fc tag at the C-terminus.
Description	<i>Siglec-15 is a transmembrane glycoprotein in the Siglec family. Siglecs are type I transmembrane proteins where the NH₃⁺-terminus is in the extracellular space and the COO⁻-terminus is cytosolic. Each Siglec contains an N-terminal V-type immunoglobulin domain (Ig domain) which acts as the binding receptor for sialic acid. These lectins are placed into the group of I-type lectins because the lectin domain is an immunoglobulin fold. All Siglecs are extended from the cell surface by C2-type Ig domains which have no binding activity. Siglecs differ in the number of these C2-type domains. Siglec-15 function is important for osteoclast formation and TRANCE/RANK Ligand signaling in osteoclasts.</i>
Expression System	HEK293
Species	Cynomolgus
Tag	C-Fc Tag
Form	Lyophilized from a 0.2 µm filtered solution of 50mM Tris-HCl, 100mM Glycine, 150mM NaCl, pH 7.5.
Molecular Mass	55-70kDa, reducing conditions.
Protein length	Phe20-Thr263
Endotoxin	Less than 0.1 ng/µg (1 EU/µg) as determined by LAL test.
Purity	Greater than 95% as determined by reducing SDS-PAGE.
Storage	Lyophilized protein should be stored at < -20°C, though stable at room temperature for 3 weeks.
Reconstitution	Always centrifuge tubes before opening. Do not mix by vortex or pipetting. It is not recommended to reconstitute to a concentration less than 100 µg/ml. Dissolve the lyophilized protein in distilled water. Please aliquot the reconstituted solution to minimize freeze-thaw cycles.

SDS-PAGE

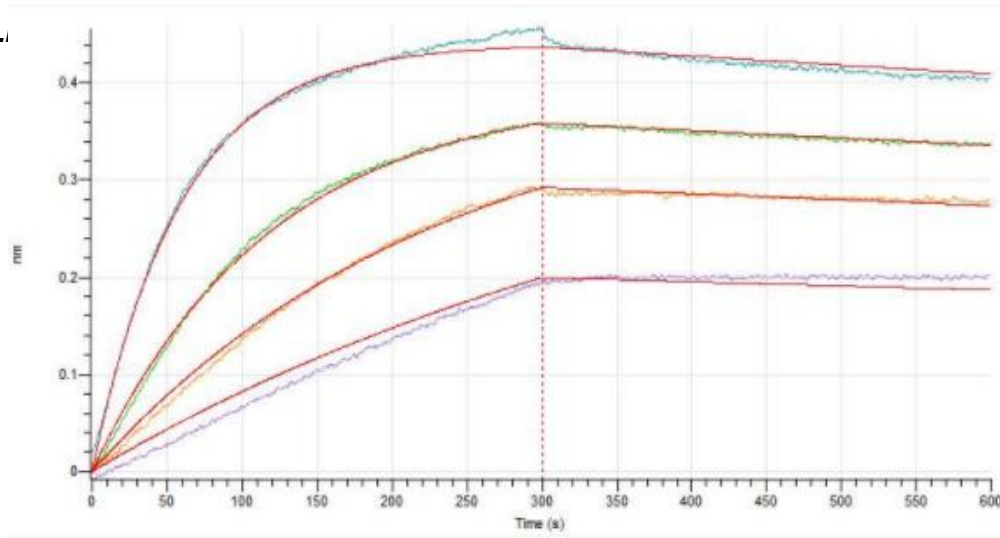


Bioactivity-ELISA 1



Immobilized Cynomolgus Siglec-15-Fc at 2 μ g/ml (100 μ l/well) can bind Anti-Human Siglec15 mAb. The ED50 of Anti-Human Siglec15 mAb is 20.9 ng/ml.

Bioactivity-BL



Loaded Anti-Human Siglec15 mAb-mFc on AMQ Biosensor, can bind Cynomolgus Siglec-15-Fc with an affinity constant of 0.16 nM as determined in BLI assay.