

CBMC-MCdex1 microcarriers

Product Information

Cat#No# MCdex-01

Product Overview

General-purpose microcarrier for most established, anchorage-dependent cell lines. Contains positive charges throughout the microporous matrix. Transparent for easy microscopic examination of attached cells.

Form dry powder

Characteristic

CBMC-MCdex1 is based on a cross-linked dextran matrix which is substituted with positively charged N, N-diethylaminoethyl groups. The charged groups are distributed throughout the microcarrier matrix and the resin has an ionic capacity of 1.4 to 1.6 mmol Cl⁻ /g of resin.

Applications

Applications include the production of large quantities of cells, viruses and recombinant cell products (e.g. interferon, enzymes, nucleic acids, hormones), studies on cell adhesion, differentiation and cell function, perfusion column culture systems, microscopy studies, harvesting mitotic cells, isolation of cells, membrane studies, storage and transport of cells, assays involving cell transfer and studies on uptake of labelled compounds.

Quality control analysis

Each batch of CBMC-MCdex is subjected to stringent tests to examine both physiochemical and functional properties. One cell type is cultured over a week-long period to ensure the microcarriers support high density cell growth.

Matrix

Cross-linked dextran

Swelling

20 ml/g

Average particle size

190µm Spherical

CBMC-MCdex1 microcarriers

Storage

Packs of CBMC-MCdex stored unopened under dry conditions are stable for more than eight years. Alternatively, CBMC-MCdex which has been hydrated and sterilized can also be stored sterile in PBS for at least two years at 4°C.

Warning

Do not use the product in any other way than described in these instructions. The container system must NOT be used for any other purposes than transfer of CBMC-MCdex Gamma microcarriers. The containers are NOT pressure vessels!

Size	25g; 100g; 500g; 1kg; 2.5kg; 5kg
-------------	----------------------------------

Surface

Hydrophilic DEAE exchanger, positive charge

Charge Density

1.4 –1.6 mmol CL-/g dry substance

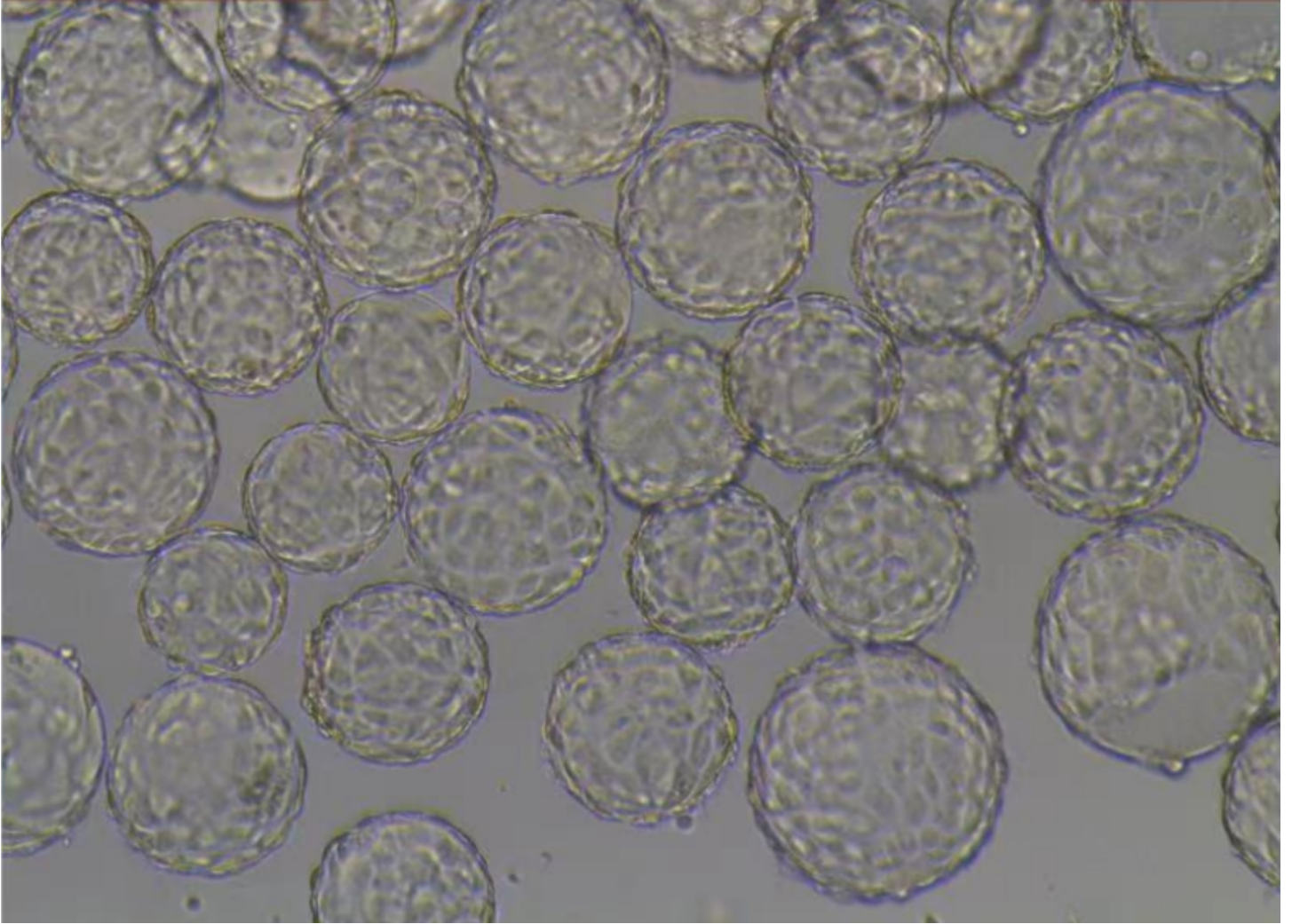
Approximate Surface Area Dry Weight

0.44 m²/g

Approximate Number of Micro-Carriers Dry Weight

4.3 × 10⁶

CBMC-MCdex1 microcarriers



Inoculate 150ml, after 96h, 10X
