

RuvB (protein, positive control)

Qty: AS21 4544P

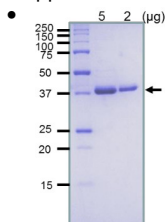
AS21 4544P | Protein/positive control for Western blot

Price: 473 €

Agrisera Western Blot protocol and video tutorials

- Product Info
- Purity: Contans 50% glycerol, 10 mM Tris-HCl (pH 7,5), 2 mM EDTA, 100 mM NaCl, 5 mM mercaptoethanol. Over 95 % pure by SDS-PAGE.
- Format: Liquid
- Quantity: 20 µg
- Storage: Store at -20°C or -80°C for a longer period of time; once make aliquots to avoid repeated freeze-thaw cycles. Please remember to spin the tubes briefly prior to opening them to avoid any losses that might occur from material adhering to the cap or sides of the tube.
- Tested applications: Western blot (WB)
- Expected | apparent MW: 37 kDa

- Application Examples



5 and 2 µg of highly purified RuvB protein from *Escherichia coli* was separated on SDS-PAGE and stained by Coomassie.

- Additional Information

- This product can be used in:

- Additional information:

- *in vitro* functional studies. RuvA and RuvB are forming a complex that promotes Holiday junction (a recombination intermediate) branch-migration by using ATP hydrolysis energy.
- As a positive control in Western blot and standar in ELISA.

Additional information (application): RuvB protein is full length, highly purified (over 95 %, SDS-PAGE), recombinant. UniProt: [P0A812](https://www.uniprot.org/uniprot/P0A812)

- Background

Background: *E. coli* **RuvB** protein forms a complex with RuvA protein at the late stage of homologous recombination and recombination repair and binds specifically to the Holliday structure which is the intermediate of recombination, allowing the migration of Holliday junction using ATP hydrolysis energy and expands the heteroduplex region.

- Product Citations

- Selected references: [Mazina et al. \(2012\)](#) Polarity and bypass of DNA heterology during branch migration of Holliday junctions by human RAD54, BLM, and RECQ1 proteins. *J Biol Chem.* 2012 Apr 6;287(15):11820-32. doi: 10.1074/jbc.M112.341347. Epub 2012 Feb 22. PMID: 22356911; PMCID: PMC3320930.
- [Han et al. \(2006\)](#). Direct observation of DNA rotation during branch migration of Holliday junction DNA by *Escherichia coli* RuvA-RuvB protein complex. *Proc Natl Acad Sci U S A.* 2006 Aug 1;103(31):11544-8. doi: 10.1073/pnas.0600753103. Epub 2006 Jul 24. PMID: 16864792; PMCID: PMC1544206.
- [Iwasaki et al. \(1992\)](#) *Escherichia coli* RuvA and RuvB proteins specifically interact with Holliday



This product is **for research use only** (not for diagnostic or therapeutic use)

contact: support@agrisera.com

Agrisera AB | Box 57 | SE-91121 Vännäs | Sweden | +46 (0)935 33 000 | www.agrisera.com

junctions and promote branch migration. Genes Dev. 1992 Nov;6(11):2214-20. doi: 10.1101/gad.6.11.2214. PMID: 1427081.