

Product Information Sheet

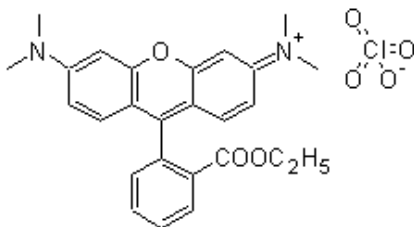
Ordering Information

Product Number: 22220
Product Name: TMRE [Tetramethylrhodamine ethyl ester] *CAS#: 115532-52-0*
Unit Size: 25 mg
Storage Conditions: <-15 °C and kept from light and moisture
Expiration Date: 12 months upon receiving

Chemical and Spectral Properties

Molecular Weight: 514.95

Chemical Structure:



Soluble in: DMSO
Excitation Wavelength: 549 nm
Emission Wavelength: 574 nm

Application Notes

Positively charged rhodamine dyes (such as rhodamine esters and rosamines) are selectively localized in mitochondria, thus they are widely used for labeling mitochondria of live cells. Like JC-1, TMRM and TMRE are widely used for measuring mitochondrial membrane potential besides their selective mitochondrial staining. These two particular rhodamine esters stain mitochondria orange in fluorescence. Their spectral properties are similar to those of TRITC, making the use of TMRM and TMRE quite convenient. TMRE is slightly more hydrophobic than TMRM.