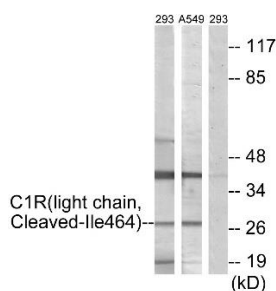


C1R (light chain,Cleaved-Ile464) Antibody

Catalog Number:	8L0230
Concentration:	1mg/ml
Molecular Weight:	27 Kd
Origin of Antibody:	Rabbit
Swiss-Prot No.:	P00736
NCBI Gene Symbol:	C1R
Other Names:	C1R, C1RA, Complement C1r component precursor
Storage/Stability:	Store at -20°C/1 year
Form of Antibody:	Rabbit IgG in phosphate buffered saline (without Mg^{2+} and Ca^{2+}), pH 7.4, 150mM NaCl, 0.02% sodium azide and 50% glycerol.
Immunogen:	The antiserum was produced against synthesized peptide derived from human C1R.
Immunogen Range:	445-494
Purification:	The antibody was purified from rabbit antiserum by affinity-chromatography using immunogen.
Specificity:	C1R (light chain, Cleaved-Ile464) Antibody detects endogenous levels of fragment of activated C1R resulting from cleavage adjacent to Ile464.
Reactivity:	Human
Applications:	WB: 1:500~1:1000 ELISA: 1:20000

Application Images:

Figure1 (WB)



Western blot analysis of lysates from 293 and A549 cells, treated with etoposide 25uM 1h, using C1R (light chain, Cleaved-Ile464) Antibody. The lane on the right is blocked with the synthesized peptide.

Figure 2 (WB)



Western Blot analysis of various cells using Cleaved-C1r LC (I464) Antibody