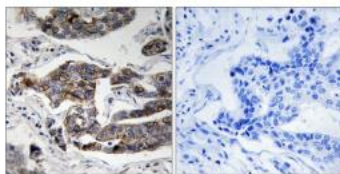


## Girdin (Phospho-Ser1417) Antibody [#8A8352]

<b>Catalog Number:</b>	8A8352
<b>Concentration:</b>	1mg/ml
<b>Molecular Weight:</b>	216 Kd
<b>Origin of Antibody:</b>	Rabbit
<b>Swiss-Prot No.:</b>	Q3V6T2
<b>NCBI Gene Symbol:</b>	CCDC88A
<b>Other Names:</b>	APE; GIV; GRDN; HkRP1; Hook-related protein 1; KIAA1212
<b>All Sites:</b>	H:S1417, M:S1417
<b>Storage/Stability:</b>	Store at -20°C/1 year
<b>Form of Antibody:</b>	Rabbit IgG in phosphate buffered saline (without $Mg^{2+}$ and $Ca^{2+}$ ), pH 7.4, 150mM NaCl, 0.02% sodium azide and 50% glycerol.
<b>Immunogen:</b>	The antiserum was produced against synthesized peptide derived from human Girdin around the phosphorylation site of Ser1417.
<b>Immunogen Range:</b>	1383-1432
<b>Purification:</b>	The antibody was affinity-purified from rabbit antiserum by affinity-chromatography using epitope-specific phosphopeptide. The antibody against non-phosphopeptide was removed by chromatography using non-phosphopeptide corresponding to the phosphorylation site.
<b>Specificity:</b>	Girdin (Phospho-Ser1417) Antibody detects endogenous levels of Girdin only when phosphorylated at Ser1417.
<b>Reactivity:</b>	Human, Mouse
<b>Applications:</b>	IHC: 1:50~1:100 ELISA: 1:1000
<b>References:</b>	Enomoto A., Dev. Cell 9:389-402(2005). Simpson F., Traffic 6:442-458(2005). Hillier L.W., Nature 434:724-731(2005).

**Application Images:****Figure1 (Imaging)**

Immunohistochemistry analysis of paraffin-embedded human breast carcinoma, using Girdin (Phospho-Ser1417) Antibody. The picture on the right is blocked with the phospho peptide.