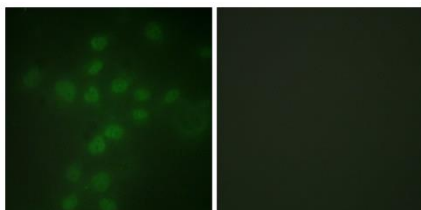


Telomerase(Phospho-Ser227) Antibody [#8A1182]

Catalog Number:	8A1182
Concentration:	1mg/ml
Molecular Weight:	126 Kd
Origin of Antibody:	Rabbit
Swiss-Prot No.:	O14746
NCBI Gene Symbol:	TERT
Other Names:	EST2; HEST2; TCS1; Telomerase catalytic subunit; Telomerase reverse transcriptase; TERT; TRT
All Sites:	H:S227
Storage/Stability:	Store at -20°C/1 year
Form of Antibody:	Rabbit IgG in phosphate buffered saline (without Mg^{2+} and Ca^{2+}), pH 7.4, 150mM NaCl, 0.02% sodium azide and 50% glycerol.
Immunogen:	The antiserum was produced against synthesized peptide derived from human Telomerase around the phosphorylation site of Ser227.
Purification:	The antibody was affinity-purified from rabbit antiserum by affinity-chromatography using epitope-specific phosphopeptide. The antibody against non-phosphopeptide was removed by chromatography using non-phosphopeptide corresponding to the phosphorylation site.
Specificity:	Telomerase (Phospho-Ser227) Antibody detects endogenous levels of Telomerase only when phosphorylated at Ser227.
Reactivity:	Human
Applications:	IF: 1:100~1:500 ELISA: 1:1000
References:	Nakamura T.M., Science 277:955-959(1997). Meyerson M., Cell 90:785-795(1997). Wick M., Gene 232:97-106(1999)

Application Images:

Figure1 (IF)



Immunofluorescence analysis of HUVEC cells, using Telomerase (Phospho-Ser227) Antibody. The picture on the right is blocked with the phospho peptide.