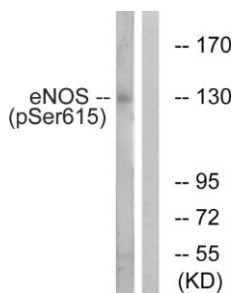


## eNOS(Phospho-Ser615)Antibody [#8A1145]

<b>Catalog Number:</b>	8A1145
<b>Concentration:</b>	1mg/ml
<b>Molecular Weight:</b>	133 Kd
<b>Origin of Antibody:</b>	Rabbit
<b>Swiss-Prot No.:</b>	P29474
<b>NCBI Gene Symbol:</b>	NOS3
<b>Other Names:</b>	cNOS; Constitutive NOS; EC-NOS; ECNOS; Endothelial NOS; Nitric-oxide synthase, endothelial; NOS, type III; NOS3; NOSIII
<b>All Sites:</b>	H:S615 M:S614 R:S614
<b>Storage/Stability:</b>	Store at -20°C/1 year
<b>Form of Antibody:</b>	Rabbit IgG in phosphate buffered saline (without $Mg^{2+}$ and $Ca^{2+}$ ), pH 7.4, 150mM NaCl, 0.02% sodium azide and 50% glycerol.
<b>Immunogen:</b>	The antiserum was produced against synthesized peptide derived from human eNOS around the phosphorylation site of Ser615.
<b>Purification:</b>	The antibody was affinity-purified from rabbit antiserum by affinity-chromatography using epitope-specific phosphopeptide. The antibody against non-phosphopeptide was removed by chromatography using non-phosphopeptide corresponding to the phosphorylation site.
<b>Specificity:</b>	eNOS (Phospho-Ser615) Antibody detects endogenous levels of eNOS only when phosphorylated at Ser615.
<b>Reactivity:</b>	Human, Mouse, Rat
<b>Applications:</b>	WB: 1:500~1:1000 ELISA: 1:40000
<b>References:</b>	Janssens S.P., J. Biol. Chem. 267:14519-14522(1992). Janssens S.P., J. Biol. Chem. 267:22694-22694(1992). Marsden P.A., FEBS Lett. 307:287-293(1992).

### Application Images:

**Figure1 (WB)**



Western blot analysis of lysates from K562 cells treated with EGF 40nM 30', using eNOS (Phospho-Ser615) Antibody. The lane on the right is blocked with the phospho peptide.