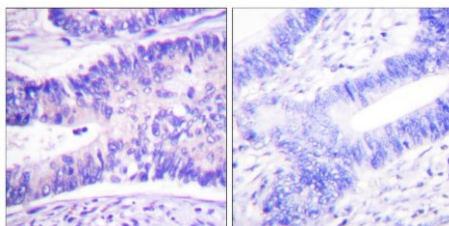


WAVE1 (Phospho-Tyr125) Antibody [#8A0598]

Catalog Number:	8A0597
Concentration:	1mg/ml
Molecular Weight:	61 Kd
Origin of Antibody:	Rabbit
Swiss-Prot No.:	Q92558
NCBI Gene Symbol:	WASF1
Other Names:	KIAA0269; SCAR1; Verprolin homology domain-containing protein 1; WAS1; WASF1; WASP-family protein member 1; Wiskott-Aldrich syndrome protein family member 1
All Sites:	H:Y125 M:Y125 R:Y125
Storage/Stability:	Store at -20°C/1 year
Form of Antibody:	Rabbit IgG in phosphate buffered saline (without Mg^{2+} and Ca^{2+}), pH 7.4, 150mM NaCl, 0.02% sodium azide and 50% glycerol.
Immunogen:	The antiserum was produced against synthesized peptide derived from human WAVE1 around the phosphorylation site of Tyr125.
Purification:	The antibody was affinity-purified from rabbit antiserum by affinity-chromatography using epitope-specific phosphopeptide. The antibody against non-phosphopeptide was removed by chromatography using non-phosphopeptide corresponding to the phosphorylation site.
Specificity:	WAVE1 (Phospho-Tyr125) Antibody detects endogenous levels of WAVE1 only when phosphorylated at Tyr125.
Reactivity:	Human, Mouse, Rat
Applications:	WB: 1:500~1:1000 IHC: 1:50~1:100 ELISA: 1:1000
References:	John P. Dahl, J. Neurosci., Apr 2003; 23: 3343. Aiwu Cheng, J. Neurosci., Feb 2007; 27: 1519 - 1528. Koji Eto, Blood, Jul 2007; 10.1182/blood-2007-04-085860. Atsushi Oda, Blood, Apr 2005; 105: 3141 – 3148.

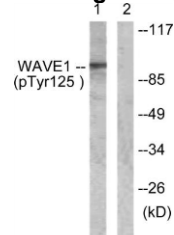
Application Images:

Figure1 (IHC)



Immunohistochemistry analysis of paraffin-embedded human colon carcinoma, using WAVE1 (Phospho-Tyr125) antibody. The picture on the right is blocked with the phospho peptide.

Figure 2 (WB)



Western blot analysis of lysates from NIH/3T3 cells treated with Insulin at 0.01u/ml 15', using WAVE1 (Phospho-Tyr125) antibody. The lane on the right is blocked with the phospho peptide.