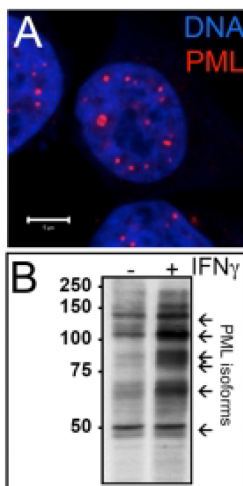




anti-PML

anti-human PML
rabbit, polyclonal

Cat. No.	Amount
ABD-030	50 µl



Applications:

Indirect Immunofluorescence 1:250. Western Blot 1:500

Description:

Polyclonal Antibody pABahPML(460-479)#3 to human PML.

Specificity:

Antibody specificity was evaluated by indirect immunofluorescence and western blotting (see Figure 1A and B). The antibody detects all PML isoforms according to Condemine et al. (2006).

Immunogen:

The antibody binds to a peptide corresponding to amino acids 460-479 (KGPSYGEDVSNTTQKRKC) of the human PML protein. No cross reaction with mouse PML protein was observed in Western blots. The immunogen peptide sequence is not conserved in rat, chimpanzee, dog, or bovine PML proteins.

Selected References:

Krejčí et al. (2008) Nuclear organization of PML bodies in leukaemic and multiple myeloma cells. *Leukemia Research* **32**:1866.

Condemine et al. (2006) Characterization of endogenous human promyelocytic leukemia isoforms. *Cancer Res.* **66**:6192.

For general laboratory use.

Please centrifuge briefly before opening (volume \leq 2 ml).

Shipping: shipped on gel packs

Storage Conditions: store at -20 °C

Additional Storage Conditions: avoid freeze/thaw cycles, store in aliquots

Shelf Life: 12 months

Form: liquid (Supplied as serum)